

# MARKET BULLETIN

Vol. 97 • Num. 23

December 7, 2023

Est.

1913



## YELLOW-LEGGED HORNET DETECTED IN JASPER COUNTY

CLEMSON OFFICIALS ASK PUBLIC TO REPORT LARGE HORNETS

BY CLEMSON UNIVERSITY

An invasive yellow-legged hornet was trapped in Jasper County, according to Clemson University officials tasked with protecting the state's beekeeping industry.

The hornet was captured Nov. 9, and the finding was confirmed by the USDA's Animal and Plant Health Inspection Service (APHIS) Nov.

16. This is the first known detection of the hornet (*Vespa velutina*) in South Carolina, after Georgia officials reported a Savannah-area sighting in August.

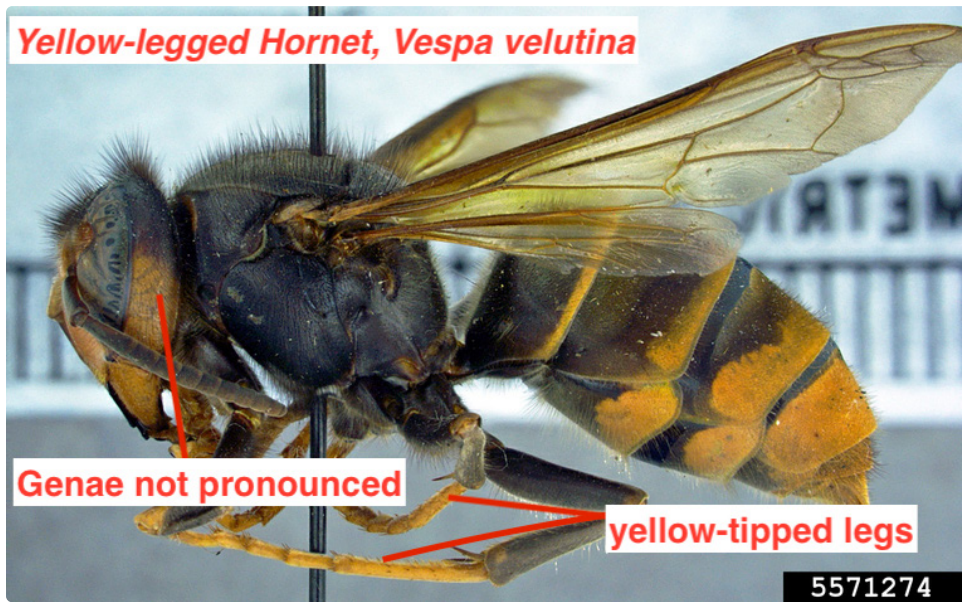
While the yellow-legged hornet — not to be confused with the northern giant hornet — is no more harmful to humans than other hornets, it can have a devastating impact on both managed and wild bees.

Clemson officials are urging anyone who suspects they have spotted a yellow-legged hornet to report their findings to [clemson.edu/public/regulatory/plant-industry/invasive/ylh.html](https://clemson.edu/public/regulatory/plant-industry/invasive/ylh.html).

"South Carolina has a robust beekeeping industry and an enthusiastic beekeeping hobbyist community. Bees are also essential to the state's agriculture industry and the safety of our food supply as pollinators. This is why it is so important that South Carolina citizens remain vigilant and report sightings," said Steven Long, assistant director, Clemson Department of Plant Industry (DPI).

The South Carolina detection comes after DPI's Apiary Inspection Program — the regulatory agency charged with protecting the state's beekeeping industry — collaborated with the Clemson Cooperative Extension Apiculture and Pollinator Program to proactively monitor Lowcountry locations through an elaborate trapping system.

While the detection does not necessarily indicate that yellow-legged hornets have established habitat



in the state, hornets know no borders and the Lowcountry's proximity to Savannah is giving officials cause for concern. As a result, Clemson DPI will be enhancing its current trapping efforts in the area, will work with federal officials to confirm suspected specimens and will respond to active hornet colonies if they are located.

"The yellow-legged hornet is a predatory insect that has been reported to attack western honeybee colonies and has become a serious pest of beekeeping operations where it has been introduced," said Ben Powell, who directs Clemson Cooperative Extension's Apiary and Pollinator program. "Establishment of this exotic pest in the U.S. would pose a significant threat to our already embattled beekeeping enterprises."

"USDA applauds the swift response from Clemson DPI to the detection of a yellow-legged hornet in South Carolina," said Dr. Mark Davidson, Deputy Administrator of APHIS' Plant Protection and Quarantine Program. "APHIS has supported Clemson DPI by providing technical and financial assistance since the initial detection of this pest was first found in Savannah, Georgia. APHIS is committed to working with our state partners on the eradication of this pest. The public also play a critical role in helping to eradicate this pest by being vigilant and reporting any signs of the yellow-legged hornet."

The yellow-legged hornet is native to Southeast Asia and has established itself in most of Europe and areas of the Middle East and Asia. The hornet builds egg-shaped paper nests above ground and often in trees. The nest can be large and house an average of 6,000 workers. This exotic hornet may be confused with several native insects, including the cicada killer wasp, the bald-faced hornet, paper wasps, queen yellowjackets, wood wasps and robber flies, but is distinguished from these other stinging insects by its larger size.

## COMMISSIONER'S CORNER



HUGH E. WEATHERS

SOUTH CAROLINA COMMISSIONER OF AGRICULTURE

## ON THE ROAD AND PAVING THE ROAD

December is off to a busy start.

Last week was the South Carolina Farm Bureau annual meeting at Myrtle Beach. This week, marketing staff and I are on the road at the New York Produce Show. Connecting with regional and national buyers is key to supporting and expanding the produce industry in the Palmetto state. The New York and northeast US-area market in particular is crucially important for many South Carolina producers, and we maintain a presence at this show each year. And we are well-positioned because, over the past few years, retailers have been increasingly interested in sourcing from the East Coast. Through our Market Development and Retail Merchandising efforts, we connect retailers with producers and provide Certified South Carolina branding materials to support our local producers.

We also pave the road. Mark your calendars for March 21, 2024, when we'll hold the next Certified SC Showcase. This is a homegrown version of events like the New York Produce Show—a trade show and educational and networking event at which we connect buyers with South Carolina growers and products.

New York is a fun place to visit during the Christmas season, but I'll be heading back to the great state of South Carolina soon for

SUSTA, the Southern United States Trade Association, which is holding its fall meeting in Charleston. SUSTA paves the road for small businesses in the Southern United States to promote value-added U.S. food and agricultural products to foreign markets. SUSTA-eligible products include fresh produce; beer, wine, and spirits; meat; dairy; horticulture; forest products; and specialty foods. The organization has some very helpful programs for local businesses, like Export Readiness Training and Cost Share grants for brand promotion. This meeting is more focused on the people who make SUSTA happen, though: the 15 Southern Departments of Agriculture. We'll be talking about the latest reports from the Foreign Agricultural Service, and hearing targeted market reports on a variety of regions including sub-Saharan Africa, Mexico, Canada, and Central America, as well as how to serve businesses in our region. We also get to show off two South Carolina agribusiness success stories: Lowcountry Oyster Co. and High Wire Distilling Co.

I wish everyone a Merry Christmas and a joyful holiday season. I'm looking forward to spending some time at home with my family—and then I'll be on the road once again in the New Year.

*Hugh Weathers*



# MARKET BULLETIN DECEMBER SCHEDULE

Please note:

**There will only be one issue in December.**

Due to the holidays, the deadline schedule has been adjusted to the following:

**December 19 Ad Deadline**  
for the January 4, 2024 Issue

Ads must be received by noon (12 pm) on the deadline dates to be included.

## Market Bulletin Office

Monday – Friday • 8 AM – 4:30 PM  
803-734-2536 • [marketbulletin@scda.sc.gov](mailto:marketbulletin@scda.sc.gov)  
[agriculture.sc.gov/market-bulletin](http://agriculture.sc.gov/market-bulletin)

EDITOR Eva Moore

ADS & CIRCULATION  
COORDINATOR Janet Goins

GRAPHIC DESIGNER Stephanie Finnegan

## South Carolina Department of Agriculture Contacts

Commissioner's Office  
803-734-2190

Certified SC Program  
803-734-2207

Hemp Farming Program  
803-734-8339

Consumer Protection  
803-737-9700

Livestock & Grain  
Market News  
803-737-4491

Fruit & Vegetable Inspection  
803-737-4588

Market News Recording  
803-737-5900

Fruit & Vegetable  
Market News  
803-737-4671

Metrology Laboratory  
803-253-4052

## GIVE THE GIFT OF

South Carolina Department of Agriculture

# MARKET BULLETIN

Business contacts  Friends  Family

Share the *Market Bulletin* through a gift subscription.  
Visit [agriculture.sc.gov/market-bulletin](http://agriculture.sc.gov/market-bulletin) to subscribe.



## SALES & AUCTIONS

### Duke's Auction

December 9 • 8:30 am

Huge farm, construction, Christmas toy farm auction! Tractors, excavators, all types of implements, gates, metal frames, tiny houses, lumber, trailers, vehicles, cargo containers, trailers, wagons, etc. plan to spend the day!

5526 Savannah Hwy, North

Contact: Donald Dukes

803-533-9333 • [dukesauctiongroup@att.net](mailto:dukesauctiongroup@att.net)

[dukesauctiongroup.com](http://dukesauctiongroup.com)

## SCDA State Farmers Markets

### SOUTH CAROLINA STATE FARMERS MARKET

3483 Charleston Highway  
West Columbia, SC 29172  
803-737-4664

### GREENVILLE STATE FARMERS MARKET

1354 Rutherford Road  
Greenville, SC 29609  
864-244-4023

### PEE DEE STATE FARMERS MARKET

2513 W. Lucas Street  
Florence, SC 29501  
843-665-5154

### VISIT [AGRICULTURE.SC.GOV](http://AGRICULTURE.SC.GOV)

Click on the State Farmers Markets  
button for more information about  
each location

## SC Market Bulletin Subscription & Renewal Form

Mail completed form with check or money order payable to the SC Department of Agriculture to: SC Market Bulletin, PO Box 11280, Columbia, SC 29211  
To subscribe with a credit card online, visit [agriculture.sc.gov](http://agriculture.sc.gov), click on Market Bulletin, select Subscribe to the Market Bulletin, then follow the prompts.  
Do not send cash in the mail. Non-refundable. Allow 6 – 8 weeks for processing. Subscriptions may only be purchased for up to 2 years.

Name \_\_\_\_\_  Paper: \$15 / 1 year  Electronic: \$10 / 1 year  
\*Active email address required

Address \_\_\_\_\_  Paper & Electronic: \$20 / 1 year  
\*Active email address required

City \_\_\_\_\_ State \_\_\_\_\_ Zip \_\_\_\_\_  New  Renewal

Phone \_\_\_\_\_ Check # \_\_\_\_\_ Renewal ID # \_\_\_\_\_

Email \_\_\_\_\_  This is a gift 12/7/23

## NEXT AD DEADLINE

DECEMBER 19 • 12:00 PM

## The South Carolina Market Bulletin

(ISSN 0744-3986)

The *Market Bulletin* is published on the first and third Thursday of each month by the SC Department of Agriculture, Wade Hampton Building, Columbia, SC 29201. Periodicals postage paid at Columbia, SC 29201.

Postmaster, send address changes to:  
SC Market Bulletin, PO Box 11280, Columbia, SC 29211

### POLICIES FOR ADVERTISING

For our full policies, please visit:  
[agriculture.sc.gov/market-bulletin-policies](http://agriculture.sc.gov/market-bulletin-policies)

Only ads pertaining to the production of agricultural products and related items are published. Ads are accepted for South Carolina items, even if the seller lives out of state, provided the item is in state at the time the ad is published and at the time of sale.

Ads are published free of charge and in good faith. The *Market Bulletin* reserves the right to edit and verify ads but assumes no responsibility for their content.

Ads cannot be accepted from agents, dealers, or commercial businesses, including real estate. Sealed bids, legal notices, or consignment sales are not accepted.

### SUBMITTING ADS

No matter the submission method, submissions must include the advertiser's name, complete address with zip code and county, and phone number with area code. While we don't publish the address, we need this information for our records. Do not use all capital letters.

- **Online:** Go to [agriculture.sc.gov/market-bulletin](http://agriculture.sc.gov/market-bulletin). Select "Submit Market Bulletin Ad" and complete the form. If you include your email address, you will receive an automated reminder for a renewal.

- **Mail:** SC Market Bulletin, PO Box 11280, Columbia, SC 29211. You must use 8.5 × 11 inch paper.

- **Email:** Send ads to [marketbulletin@scda.sc.gov](mailto:marketbulletin@scda.sc.gov). Put the words "Market Bulletin ad" in the subject line.

- **Fax:** 803-734-0659

The deadline for submitting ads and notices is noon on Tuesday of the week **before** the publication date.



## UPCOMING EVENTS



### Christmas Lights Hayride

December 9 & 16 • 6 – 8 pm

#### Chasin' Time Farm

2006 Midway Road, Cheraw

[chasintimefarm@gmail.com](mailto:chasintimefarm@gmail.com) • 843-337-8095

[facebook.com/ChasinTimeFarm](https://www.facebook.com/ChasinTimeFarm)

### A Gullah Christmas Concert

December 13 • 7:30 – 9:15 pm

Concert will consist of two 40-minute performances with a 20 minute break in between. Complimentary hot chocolate, cider, and Christmas cookies will be available at the Cotton Dock prior to the performance. Tours of the plantation home beautifully decorated for Christmas will be available prior to the concert. \$30 Adults 18+, \$15 Ages 3–17, limited number of tickets available on a first-come first-serve basis.

#### Boone Hall Plantation

1235 Long Point Road, Mount Pleasant

[info@boonehallplantation.com](mailto:info@boonehallplantation.com) • 843-884-4371

Tickets: [boonehallplantation.com/special\\_event/gullah-christmas-concert](https://www.boonehallplantation.com/special_event/gullah-christmas-concert)

[facebook.com/boonehallplantation](https://www.facebook.com/boonehallplantation)

### Fall Farm Training

December 15 • 12 – 5 pm

Come and learn how to get up to \$10k in funding for your next farming project! Agritourism tour and training discussion. Inbox us for additional info or vendor opportunities.

#### Kidogo Farms

640 Lanes Creek Drive, Georgetown

[infokidogo@gmail.com](mailto:infokidogo@gmail.com)

[facebook.com/kidogofarms](https://www.facebook.com/kidogofarms)

### Christmas on the Farm

December 16 • 9 am – 12 pm

Experience life on the family farm in Horry County from 1900–1955! Join us to see how the farm family would have prepared for the Christmas season. Visit the farmhouse to see seasonal activities including cooking on the wood burning stove and decorating the Christmas tree. We'll also have activities for children and a variety of demonstrations throughout the Farm!

#### LW Paul Living History Farm

Hwy 701 North and Harris Shortcut Road, Conway

[hcg.museum@horrycountysc.gov](mailto:hcg.museum@horrycountysc.gov) • 843-915-5321

[horrycountymuseum.org](https://www.horrycountymuseum.org)

### Christmas Market on the Farm with Santa

December 16 • 11 am – 5 pm

Join us at Marshall Farm and let us be a part of your next family holiday tradition!

#### Marshall Farm

317 Old Georgetown Road East, Bethune

[marshallfarmssc@yahoo.com](mailto:marshallfarmssc@yahoo.com) • 803-272-9940

[facebook.com/farmingtheoldhomeplace](https://www.facebook.com/farmingtheoldhomeplace)

### Besom Making Workshop

December 16 • 1 – 3 pm

Join us for a one-of-a-kind workshop where we will explore the traditional craft and emerging art form of broom making! Michaela from Steadfast Flowers will guide you through the process of tying and decorating your very own dried floral Besom! Bless your home, give it as a gift—these brooms are a long-lasting and unique way to invite good intentions into your Yuletide season! All supplies are included, along with light refreshments prepared specially for you.

#### Five Blossoms Farm

1121 Crossland Road, Clover

803-610-5809

[fiveblossomsfarm.com/?product=12-16-besom-making-workshop&fbclid=IwARom3jlo8KGtnPcvfjVXhPtCQqDXxjHAtPITzoYqdSvVqYWYfqSeteJPsoE](https://www.fiveblossomsfarm.com/?product=12-16-besom-making-workshop&fbclid=IwARom3jlo8KGtnPcvfjVXhPtCQqDXxjHAtPITzoYqdSvVqYWYfqSeteJPsoE)

[facebook.com/fiveblossomsfarm](https://www.facebook.com/fiveblossomsfarm)

[facebook.com/fiveblossomsfarm](https://www.facebook.com/fiveblossomsfarm)

[facebook.com/fiveblossomsfarm](https://www.facebook.com/fiveblossomsfarm)

[facebook.com/fiveblossomsfarm](https://www.facebook.com/fiveblossomsfarm)

[facebook.com/fiveblossomsfarm](https://www.facebook.com/fiveblossomsfarm)

[facebook.com/fiveblossomsfarm](https://www.facebook.com/fiveblossomsfarm)

[facebook.com/fiveblossomsfarm](https://www.facebook.com/fiveblossomsfarm)

[facebook.com/fiveblossomsfarm](https://www.facebook.com/fiveblossomsfarm)

[facebook.com/fiveblossomsfarm](https://www.facebook.com/fiveblossomsfarm)

[facebook.com/fiveblossomsfarm](https://www.facebook.com/fiveblossomsfarm)

[facebook.com/fiveblossomsfarm](https://www.facebook.com/fiveblossomsfarm)

[facebook.com/fiveblossomsfarm](https://www.facebook.com/fiveblossomsfarm)

[facebook.com/fiveblossomsfarm](https://www.facebook.com/fiveblossomsfarm)

[facebook.com/fiveblossomsfarm](https://www.facebook.com/fiveblossomsfarm)

[facebook.com/fiveblossomsfarm](https://www.facebook.com/fiveblossomsfarm)

[facebook.com/fiveblossomsfarm](https://www.facebook.com/fiveblossomsfarm)

[facebook.com/fiveblossomsfarm](https://www.facebook.com/fiveblossomsfarm)

[facebook.com/fiveblossomsfarm](https://www.facebook.com/fiveblossomsfarm)

[facebook.com/fiveblossomsfarm](https://www.facebook.com/fiveblossomsfarm)

[facebook.com/fiveblossomsfarm](https://www.facebook.com/fiveblossomsfarm)

### Sip n' Taste – The Holiday Edition

December 16 • 5 – 7 pm

We are offering an intimate ADULT ONLY outing to get into the holiday spirit in traditional German style! Come enjoy a warm mug of Glühwein—mulled wine with spices—and nibble on traditional German Lebkuchen cookies to spice up your palate! Warm cider and traditional Vorspeisen—the German word for appetizers or starters—prepared specially for you will also be on the menu! One of John's fondest childhood memories is the Christkindlesmarkt—Christmas Market celebrated all over Germany during the 4 weeks of Advent before Christmas—that he got to experience growing up in Germany. At these markets, you can buy crafts and holiday decorations, listen to Christmas music, and enjoy Glühwein, Bratwurst, and many sweet treats. We are excited to share some of these family traditions with our community right here on the farm! \$65 investment includes: Entry for 1 person, Sip n' Taste Experience, and a Mini Christmas Tabletop to take home.

#### Five Blossoms Farm

1121 Crossland Road, Clover

803-610-5809

[facebook.com/fiveblossomsfarm](https://www.facebook.com/fiveblossomsfarm)

### Colonial Christmas

December 16 • 5 – 7 pm

Join us for an evening of family fun. There will be music provided by a local choir. Food, drinks, and s'mores will be available for purchase in the tavern. Take a wagon ride and enjoy our story walk. Children can listen to a reading of the traditional favorite Christmas story, make a colonial toy, and help make ornaments for our "Christmas for the Critters" tree.

#### Historic Camden

222 Broad Street, Camden

[info@historicc Camden.org](mailto:info@historicc Camden.org) • 803-432-9841

Tickets: [eventbrite.com/e/colonial-christmas-at-historic-camden-tickets-754074937437?aff=oddtcreator&fbclid=IwAR1kniED1tYvzOJRRm8lsJNzQKEVw4fwyXYqmy8X8zAqU2C3kOc6TOawXQ](https://www.eventbrite.com/e/colonial-christmas-at-historic-camden-tickets-754074937437?aff=oddtcreator&fbclid=IwAR1kniED1tYvzOJRRm8lsJNzQKEVw4fwyXYqmy8X8zAqU2C3kOc6TOawXQ)

[facebook.com/HistoricCamdenFoundation](https://www.facebook.com/HistoricCamdenFoundation)

### Winter Solstice Celebration

December 21 • 6 pm

Join us for a super fun and myco-centric Winter Solstice celebration at Mushroom Mountain! Our celebration will be led by Lizza the Elf, along with other Mushroom Mountain staff and will feature winter-themed refreshments, activities and a presentation about the mysterious lore of the Amanita Muscaria mushroom and how it has influenced celebrations all over the globe for centuries. Warning to parents: Santa Claus and mysterious, esoteric origin story will be discussed in this presentation. Hint: Santa is a mushroom! Bring your own pizza to cook in our mushroom-pizza oven! We will offer a warming fire (weather permitting), Yule-tide and mushroomy snacks, mushroom painting activities and a Yule Log celebration. This event is limited to 40 people.

#### Mushroom Mountain

200 Finley Road, Easley

[sporeprints@gmail.com](mailto:sporeprints@gmail.com) • 864-859-3080

[facebook.com/MushroomMountainFarm](https://www.facebook.com/MushroomMountainFarm)

### The Stable of Bethlehem

December 21 – 23 • 6 – 8 pm

Join us as we bring to life the humble beginnings of the birth of our Lord and Savior. Truly experience the wonder of this living nativity. Showings will begin at top of the hour. Please let us know if you or your church would like to participate. Famoda Farm Festivities & Events Grazers: Famoda Farm to Table.

#### Famoda Farm

7410 Mountain View Road, Taylors

[info@famodafarm.com](mailto:info@famodafarm.com) • 864-663-7700

[facebook.com/GrazersFamodaFarm](https://www.facebook.com/GrazersFamodaFarm)

### King George Lavender Farm and Mercantile

Fridays & Saturdays through December 23

10 am – 2 pm

The holidays are just around the corner so get ready to shop! Our seasonal linen sprays will be back in stock as well as our custom gift boxes, lavender production, Christmas decor, and more. Cookies will be available in the shop but we do take orders for those as well, so please call us.

#### King George Lavender Farm and Mercantile

490 Daisy Lane, Barnwell

[elinor.poole@kinggeorgelavender.com](mailto:elinor.poole@kinggeorgelavender.com) • 803-300-5637

[kinggeorgelavender.com](https://www.kinggeorgelavender.com)

[facebook.com/kglavender](https://www.facebook.com/kglavender)

### Home for the Holidays

Through January 6 • 9 am – 2 pm

Step back in time with us to the roaring twenties as we embellish the Magnolia House in the jewel tones of the 1920s for the holiday season. Our Magnolia House tour will spend time highlighting Norwood and Sara Hastie, who entertained lavishly during their 30 year ownership—including visits from presidents, first ladies, innovators and A-list celebrities of the time. Enjoy festive decor, winter treats at the Peacock Cafe, and the beauty of the wildlife and gardens. House tour tickets and garden admission available on-site and online.

#### Magnolia Plantation and Gardens

3550 Ashley River Road, Charleston

[magnoliaplantation.com](https://www.magnoliaplantation.com)

### Educational Farm Tours

Looking to learn about regenerative farming? Marissa Paykos, the brain power and visionary behind Whippoorwill Farms will take you up close and personal! For individuals and groups alike, if you're looking for an education in regenerative farming practices & cultivating biodiversity through farming this tour is for you. Marissa will extensively cover how they began farming back in 2015, how the big farm came to be and what the land was like when they started developing it back in 2019. You'll see how far they've come and what their hopes and dreams are for the future and how they work to achieve progress towards those goals every day. Tours begin at a minimum of \$225. For groups over 15 people, the Farm Tour is bookable at \$15/person. Tours are best for ages 7+. For more information, to inquire about availability, or to book your farm tour, contact us.

#### Whippoorwill Farms

870 Tillman Road, Ridgeland

[assistantinoveralls@whippoorwillfarms.com](mailto:assistantinoveralls@whippoorwillfarms.com)

843-473-5231

[whippoorwillfarmssc.com/farmtours](https://www.whippoorwillfarmssc.com/farmtours)

[facebook.com/WWFSC](https://www.facebook.com/WWFSC)





# South Carolina Specialty Food Association Members

## Beverages

### AMETHYST NA SPIRITS LLC

Bluffton  
Non-alcoholic spirits  
[amethystnspirits.com](http://amethystnspirits.com) | 843-872-0158

### BURNT CHURCH DISTILLERY

Bluffton  
Distilled spirits  
[burntchurchdistillery.com](http://burntchurchdistillery.com) | 843-872-0158

### COASTAL COFFEE ROASTERS

Summerville  
Coffee roasting kitchen, co-op kitchen  
[coastalcoffeeroasters.com](http://coastalcoffeeroasters.com) | 843-376-4559

### DEEP WATER VINEYARD

Wadmalaw Island  
Muscadine wines  
[deepwatervineyard.com](http://deepwatervineyard.com) | 843-559-6876

### OLIVER PLUFF & CO.

Charleston  
Teas, toddies, wassails, coffee, and cacao  
[oliverpluff.com](http://oliverpluff.com) | 843-779-6622

### SALLIE'S GREATEST

Cameron  
Fruit juice simple syrups  
[salliesgreatest.com](http://salliesgreatest.com) | 803-823-9075

### SEA ISLAND ORGANICS

Charleston  
Elderberry products  
[seaislandorganics.com](http://seaislandorganics.com)

### SEASIDE GROWN, LLC

Saint Helena Island  
Bloody Mary Mix  
[seasidegrown.com](http://seasidegrown.com) | 843-377-2602

### TABLE ROCK TEA COMPANY

Pickens  
Teas  
[tablerocktea.com](http://tablerocktea.com) | 864-915-0571

## Flour, Rice, & Grits

### ADLUH FLOUR

Columbia  
Flour, cornmeal, breaders, bakery mixes, stone ground grits  
[adluh-store.myshopify.com](http://adluh-store.myshopify.com) | 803-779-2460

### ALTMAN FARM AND MILL

Effingham  
Cornbread Mix, Stone Ground Grits, and Pancake & Waffle Mix  
[altmanfarm.com](http://altmanfarm.com) | 843-992-6867

### CAROLINA PLANTATION RICE CO.

Darlington  
White and brown aromatic rice, grits, cow peas, Charleston or Carolina Gold rice  
[carolinaplantationrice.com](http://carolinaplantationrice.com) | 843-393-1812

### FAITHFUL FOODS INC

West Columbia  
Southern gourmet mixes, rices, soups, dips, salsas, fudge, pralines, gift baskets  
[faithfulfoods.com](http://faithfulfoods.com) | 803-957-3602

### MARSH HEN MILL

Edisto Island  
Grits and cornmeal  
[marshhenmill.com](http://marshhenmill.com) | 843-603-0074

### SAVOR THE FLAVOR

Sumter  
Gourmet rice and grits mixes  
[savortheflavorsc.com](http://savortheflavorsc.com) | 800-390-8027

### THE CONGAREE MILLING COMPANY

Columbia  
Stone-ground grits, hominy grits, polenta, cornmeal, corn flour, and oats  
[thecongaemillingcompany.com](http://thecongaemillingcompany.com) | 803-269-3833

### TRIO SPECIALTY FOOD

Pendleton  
McLib's Southern Dumplings  
[mclibsdumplings.com](http://mclibsdumplings.com) | 864-624-6225

## Jam + Honey

### ADAMS APPLE COMPANY

Lexington  
Apple butters, jams, relish, and sauces  
[adamsappleco.com](http://adamsappleco.com) | 803-446-7286

### BEE WELL HONEY FARM AND SUPPLY, INC.

Pickens  
Honey, raw milk, fresh eggs, jams, and Bee Supply store for beekeeping needs  
[beewellhoneyfarm.com](http://beewellhoneyfarm.com) | 864-898-5122

### BLUE TRUCK ORGANICS, LLC

Georgetown  
Blueberries, certified organic mushrooms, oranges, elderberries, blackberries, peaches, olives, and jams  
[bluetruckorganics.com](http://bluetruckorganics.com) | 704-644-9996

### CANEBRAKE FARMS

Saluda  
Salsa, relish, pickled vegetables, jams, jellies, preserves, and fruit butters.  
803-275-7237

### MCLEOD FARMS

McBee  
Jarred products, fresh baked breads, cakes, and pies  
[macspride.com](http://macspride.com) | 843-335-8335

### POPPA D'S FARM LLC

North Augusta  
Southern Style Peach Chutneys and Southern Sauces  
803-341-5723

### SAKHAR JAMS

Columbia  
Small batch jams, jellies, and marmalades  
[sakharjams.com](http://sakharjams.com) | 803-200-2118

### SALLIE'S GREATEST

Cameron  
Herbal jams  
[salliesgreatest.com](http://salliesgreatest.com) | 803-823-9075

### TASTEE TREATS

Mount Pleasant  
Jams, seasonings, and more  
[tastetreats-sc.com](http://tastetreats-sc.com) | 843-696-9558

## Meat + Dairy

### FARMERS MARKET FLAVORS

Union  
Frozen treats  
[veggie-icecream.com](http://veggie-icecream.com) | 864-427-1530

### LOWCOUNTRY CREAMERY, LLC

Bowman  
Milk and cultured dairy products  
[lowcountrycreamery.com](http://lowcountrycreamery.com)

### SPLIT CREEK FARM, LLC

Anderson  
Artisan goat cheeses, raw goat milk, yogurt  
[splitcreek.com](http://splitcreek.com) | 864-287-3921

### THE CRAB CAKE LADY

Murrells Inlet  
Crab cakes, Low Country Boil Bags, She Crab soup, Char-grilled Oysters, Bacon Wrap Scallops, Conch Fritters, Key Lime Pies and several homemade soups, sauces, and seasonings  
[localscseafood.com](http://localscseafood.com) | 843-651-5707

### THE PEACH STAND

Fort Mill  
Custom Butcher Shop, Cafe, Bakery, Ice Cream Parlor, Produce, local specialty foods  
[peachstand.com](http://peachstand.com) | 803-547-7563

## Seasonings + Sauces

### AEROSAUCE

Georgetown  
Sauces  
[aerosauce.com](http://aerosauce.com) | 843-461-4438

### BLUE WREN SPICE & CONDIMENT, LLC

Taylors  
Red Head Rub & All-Purpose Seasoning  
[bluwrenspice.com](http://bluwrenspice.com) | 864-484-3949

### BOHICA HOT SAUCE

Mauldin  
Hot sauces  
[bohicapepperhut.com](http://bohicapepperhut.com) | 864-386-8396

### BURNT AND SALTY

Mount Pleasant  
Korean mustard, coconut suka, chili glaze  
[burntandsalty.com](http://burntandsalty.com) | 843-224-1259

### CHARLESTON PIG COMPANY

Charleston  
Barbecue sauces and rubs  
[charlestonpig.com](http://charlestonpig.com) | 804-513-1540

### CHARLESTON SPICE COMPANY

Charleston  
Organic hand-blended herbs and spices  
[charlestonspice.com](http://charlestonspice.com) | 843-830-1004

[scspecialtyfood.org](http://scspecialtyfood.org)



# Find a Local Gift this Holiday Season!

## CHEF BELINDA

Winston Salem, NC  
Artisan spice blends  
[chefbelindaspices.com](http://chefbelindaspices.com) | 803-552-6450

## FREEMAN BBQ SAUCE

Denmark  
Barbecue sauce  
[freemansbbqsauce.com](http://freemansbbqsauce.com) | 803-300-1008

## GOODDADDY SAUCE

Lexington  
Barbecue sauce  
[gooddaddysauce.com](http://gooddaddysauce.com) | 803-622-0084

## INMAN SPECIALTY FOODS, LLC

Greenville  
BBQ sauces, dry rubs, seafood items, and more  
[inmanspecialtyfoods.com](http://inmanspecialtyfoods.com) | 864-351-8638

## KRAZY K'S LLC

McClellanville  
Sauces and salsa  
[krazyksbbqsauce.com](http://krazyksbbqsauce.com) | 843-991-0740

## LILLIE'S OF CHARLESTON, LLC

Charleston  
Hot sauces, mustard BBQ sauces, spice mixes, and gourmet seasoned popcorn  
[lilliesofcharleston.com](http://lilliesofcharleston.com) | 843-402-9787

## LOWCOUNTRY FLAVOR FACTORY, LLC

Charleston  
Sauces  
[SWAMPtonic.com](http://SWAMPtonic.com) | 407-312-2996

## MAS

Saint Helena Island  
Gourmet hot sauces  
[maspeppers.com](http://maspeppers.com) | 850-320-5232

## MOTHER SHUCKER'S COCKTAIL SAUCE

Columbia  
Cocktail sauce  
[mothershuckersauce.com](http://mothershuckersauce.com) | 803-261-3802

## SEA ISLAND COASTAL PRODUCTS

Columbia  
Sea salt seasoning  
[seaislandseasoning.com](http://seaislandseasoning.com) | 803-920-5768

## SMOKIN COALS SAUCE AND RUBS

Greenwood  
Sauces and rubs  
[smokincoals.com](http://smokincoals.com) | 864-230-1357

## SOBREMESA MOLE & SALSAS

Charleston  
Mole and salsa  
[ExperienceSobremesa.com](http://ExperienceSobremesa.com) | 843-849-4040

## THE PICKLED PEPPER PEOPLE

Greenville  
Spicy slaw  
[pickledpepperpeople.com](http://pickledpepperpeople.com) | 864-605-8255

## WARRANT MAN PEPPER CO. LLC

North Charleston  
Hot sauces and pepper products  
[warrantmanpepperco.com](http://warrantmanpepperco.com) | 843-580-8993

## Sweets + Snacks

### ABBOTT FARMS BAKERY, LLC

Cowpens  
Fruit breads, homemade seasonal fruit cake, and homemade ice cream  
[abbottfarmsonline.com](http://abbottfarmsonline.com) | 864-463-4487

### AUNT TEL'S PREMIUM SWEET POTATO PIE

Greenville  
Sweet potato pies  
[aunttel.com](http://aunttel.com) | 864-233-0044

### CAROLINA BEAN DIP

Pawleys Island  
Homemade bean dips  
[carolinabeandippawleysisland.com](http://carolinabeandippawleysisland.com) | 843-359-6315

### CHARLESTON SPECIALTY FOODS

Charleston  
Benne wafers, cookies, pralines, rice, grits, sauces, preserves, mixes, candy, and more  
[charlestonspecialtyfoods.com](http://charlestonspecialtyfoods.com) | 843-744-8991

### ELJAY PRETZELS

Pawleys Island  
Artisanal pretzel products  
[eljaypretzels.com](http://eljaypretzels.com) | 843-314-3212

### GILLESPIE'S PEANUTS

Hartsville  
Peanuts  
[gillespiespeanuts.com](http://gillespiespeanuts.com) | 843-383-4707

### GOLDEN KERNEL PECAN COMPANY, INC.

Cameron  
Pecans  
[goldenkernel.com](http://goldenkernel.com) | 800-845-2448

### GROWERS FOR GRACE PBC

Aiken  
Fruit puree  
[growersforgrace.com](http://growersforgrace.com) | 803-335-5938

### HOLMES SWEET HOME

Greenville  
Sweet cream caramel sauce  
[holmessweets.com](http://holmessweets.com) | 864-380-1790

### LOWCOUNTRY BRITTLES, LLC

Summerville  
Nut brittles  
843-628-9367

### MARTHA'S MENNA CHEESE LLC

Columbia  
Pimento cheese  
[marthasmennacheese.com](http://marthasmennacheese.com) | 803-238-8652

### NANA'S CAROLINA PRALINES

Greenville  
Handmade pralines  
864-281-9944

### OLDE COLONY BAKERY

Charleston  
Original Charleston Benne Wafers, Benne Cheese Crackers, Pecan Pinches, Carolina Key Lime Cookies, Cream Bread, and Cinnamon Raisin Bread  
[oldecolonybakery.com](http://oldecolonybakery.com) | 843-216-3232

### SOUTHERN SISTERS BAKERY

Charleston  
Gourmet tea cookies  
[southernsistersbakery.com](http://southernsistersbakery.com) | 843-801-2665

### SWEET BAY FOODS LLC

Spartanburg  
Nut brittles  
[sweetbayfoods.com](http://sweetbayfoods.com) | 912-531-2213

### THE ISLAND FUDGE SHOPPE

Hilton Head Island  
Homemade fudge and hand dipped chocolates  
[islandfudge.com](http://islandfudge.com) | 843-842-4280

### THE NUT HOUSE AND COUNTRY MARKET

Ridge Spring  
Pecans, gourmet pecan candy, and pecan pies and more  
[nuthouseandcountrymarket.com](http://nuthouseandcountrymarket.com) | 803-685-5335

### THE SWEETERY

Anderson  
Freshly baked cakes and cookies  
[thesweetery.com](http://thesweetery.com) | 864-224-8394

## Services [Associate Members]

### ACCOUNTFULLY LLC

Charleston  
Outsourced bookkeeping, accounting, and tax strategy for food entrepreneurs  
[accountfully.com](http://accountfully.com) | 843-501-2774

### CREATIVE FOODS, INC.

Hanahan  
Co-Packing Services for Sauces and Drink Mixes  
[creativefoodinc.com](http://creativefoodinc.com) | 843-747-5102

### DER KITCHEN

Columbia  
Commercial kitchen  
[derkitchen.com](http://derkitchen.com) | 803-779-3003

### GROWTHSPRING GROUP

Leesville, SC + Atlanta, GA  
Growth consulting services  
[growthspringgroup.com](http://growthspringgroup.com) | 803-394-5818

### IMAGINE KITCHEN

Greer  
Commercial kitchen and photo studio  
[imaginekitchen.com](http://imaginekitchen.com) | 864-663-2466

### PIGGLY WIGGLY 101

Hilton Head Island  
SC specialty food retailer  
[pigglywigglyhiltonhead.com](http://pigglywigglyhiltonhead.com) | 843-785-3881

### SWAMP FOX AGENCY

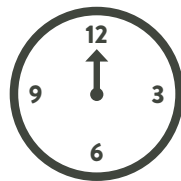
Moncks Corner  
Insurance provider for food manufacturers  
[swampfoxagency.com](http://swampfoxagency.com) | 843-761-3999

### TA-DAH! BGE

White Rock  
Gift baskets  
[tadahbge.com](http://tadahbge.com) | 803-339 9970

[scspecialtyfood.org](http://scspecialtyfood.org)





## REMINDER TO ADVERTISERS

Ads are due by noon (12 pm) on the Tuesday after the latest published issue. Any ads received after the deadline will be considered for a subsequent issue.

## AQUACULTURE

### BLUEGILL

50¢; Catfish, 75¢; Carp, \$12; Bass, \$2; trout, \$3; Minnows, \$20/lb  
Derek Long  
Newberry  
803-944-3058

### STERILE CARP

\$12; Bluegill, 55¢; Shlckr, 65¢; Rdbrst, 65¢; Ch Cat, 65¢; Mosquitofish, 40¢  
Clay Chappell  
Richland  
803-776-4923

### 5 DOMESTIC KOI

1 lrg, 1 med, 3 small, orange, wht, brn & orange, \$75, will not sep, LM, no text  
Montana Stambaugh  
Union  
864-674-1296

## CATTLE

### REG ANG & COMM BULLS

low BW, 1-3 y/o; \$1500+; 10 cows, 6-8 y/o, late calving  
Mar/Apr, selling in lots of 5, \$2500 ea  
Paul Kicidis  
Union  
864-429-6112

### SIMANG HEFRS

6 m/o, vac, dewormed & ready to go, \$1000  
Christopher Morris  
Barnwell  
803-518-5925

### REG DEXTER BULL

dun colored, proven, 2½ y/o, docile, polled, \$1200; 6 m/o Dexter bull calf, \$350  
David Oser  
Dorchester  
843-557-5200

### 2 BRAFORD BULLS

yrfg & 6 m/o, 550 lb ea, gentle, \$1100 ea  
Simpson Sikes  
Calhoun  
803-308-1993

### 20 OPEN HRFRD HEFRS

avg 750 lbs, polled, ready to breed, \$1750-2100  
Norris Fowler  
Union  
864-219-0182

### HERD DISPERSAL

FB red poll, incl yrfg bull, open hefrs, cow/calf prs, \$1500-2000  
J Wyatt  
Marlboro  
803-651-3086

### 2 REG DEXTER BULL CALVES

1 red, 1 dun, exc genetics, \$1250 ea  
Stephan Vernet  
Spartanburg  
864-363-5800

### 2 BULL CALVES

¾ Ang, ¼ Brahma, \$700 ea; 1 Brahma Red bull, \$900; 1 Ang hefr, \$1000  
Daniel Brown  
Aiken  
803-508-4520

### LONG YRLG SIM

& SimAng bulls, Al breeding, \$2500+  
Jim Rathwell  
Pickens  
864-637-8131

### ¾ GELB BULL

5 y/o named Valentine, good tmprmnt, \$2000  
Jason Nichols  
Saluda  
864-992-2753

### BLK ANG PB BULL

B-9/21, proven, \$2000  
Larry Bates  
Orangeburg  
803-308-3870

### WEANED BEEF CALVES

3-5 m/o, vac/wormed, \$350+  
Casey McCarty  
Newberry  
803-924-5239

### CHAROLAIS BULLS

9 m/o, low BW, \$2000 ea  
Lane Keasler  
Anderson  
864-965-8666

### JERSEY MILK COW

bred, 5 y/o, \$1500  
George Phillips  
Williamsburg  
843-992-1964

### RED ANG BULL

9 m/o, \$1000  
Suzanne Reed  
Anderson  
864-293-0363

### REG HRFRD BULLS

DNA EPDs, top peds, 18-21 m/o, \$3000+, will del, call/text  
Robert Roper  
Laurens  
864-923-2952

### PB SG BULLS

18 m/o, \$1500; (3) 6-8 m/o, \$1200  
Jimmy L Shealy  
Lexington  
803-532-5848

### BFMSTR PB BULLS

reg, \$1700+; yrfgs, \$1200+  
John Steele  
Lancaster  
803-283-7720

### REG BLK ANG BULLS

14-28 m/o, calving ease, docile, \$2250+; Blk Ang hefrs, weaned, vac, \$1500+  
Marc Renwick  
Newberry  
803-271-8691

### REG BLK ANG

bred hefrs, cows & prs, \$3500+; 24 m/o low input bull, w/exc feet, \$6000  
Walter Shealy  
Newberry  
803-924-1000

### 9 M/O HRFRD BULLS

\$800; 8 m/o Hrfnd hefrs, \$1000; all polled  
Billy Gallman  
Newberry  
803-276-7171

### REG POLLED HRFRD BULLS

Al sired, BSE, 14 m/o, calving ease, growth, gentle, ready to work, \$4000+  
Henry Mitchell  
York  
803-627-6142

### 3 BLK ANG HEFRS

ready to breed Feb, \$1500 ea or \$4000 for all  
Debbie Wade  
Chester  
803-581-5050

### REG BULLS

low BW, gentle, serv ready, \$2500-3500  
Bobby Baker  
Lancaster  
803-804-2230

### (7) 1 Y/O OPEN HEFRS

Blk Baldy, Blk Ang & Red Baldy, \$1500 ea  
Terry Gibert  
Greenwood  
864-993-4212

### 3 Y/O REG ANG BULL

calving ease, \$3500  
Tommie Bratton  
York  
803-417-0970

## FARM EQUIPMENT

ADS MAY NOT BE SUBMITTED BY COMMERCIAL DEALERS. A CURRENT FARM TAG ISSUED BY THE SCDMV IS REQUIRED ON ALL FARM VEHICLES.

### 6'x12' UTIL TRL

w/5' ramp, slightly used, \$850  
Gordon Hill  
Anderson  
864-617-5413

### NIEMEYER HAY TEDDER

2 basket, VGC, pull type, PTO, \$1250  
George McCooy  
Chesterfield  
843-307-8866

### LONG 2610 W/FRT LDR

good rear tires, doesn't run, parts tractor, \$3500/obo  
Edward Holliday  
Laurens  
864-684-7075

### SKID STEER

or excavator work, land clearing, digging up stumps, making roads, leveling, no job too small  
John Smith  
Pickens  
864-982-2249

### JD BAT WING

12' rotary cutter, \$16,000  
Stephen Gedosch  
Greenville  
864-982-4490

### JD 4720 4WD LDR

\$32,000; Cat D7F, \$35,000; MF 1105, \$15,000; JD 3020, \$10,000; MF 1080, \$9500  
Ronald McGraw  
Lancaster  
980-255-8584

### D-15 AC TRACTOR

w/disc & subsoiler, for parts, \$500  
Brenda Fogle  
Orangeburg  
803-707-5678

### '18 PACESETTER GRAIN TRL

14' w/hopper btm, 450 bu w/shur-lock tarp, 12,000 lb axles, \$17,500  
Boyd King Jr  
Anderson  
864-940-8994

### JD DOZER 444C

2 cyl, needs to be restored, \$3000; 12' JD disc harrow, pull type, \$700; HD BH scrape, \$1800  
Jack Hurst  
Chesterfield  
864-809-0242

### JD 970 4WD TRACTOR

5' scrape, 5' bush hog, 5' roto tiller, \$13,000 obo  
Wayne Wertz  
Saluda  
864-941-6860

### JD 3020D W/46A LDR

lrg bucket, rebuilt hyd pump & steering motor, good tires, \$9000  
Frank McNeill  
Dorchester  
843-701-0965

### 4WD JD 4450

cab, duals, 540 & 1000 PTO, GC, \$49,000  
Jeffrey Gilmore  
Chesterfield  
843-517-0315

### '17 TOPLINE UTIL TRL

77x14, LN, \$1800; tow behind rough cut mwr, \$2000  
Bill Day  
Anderson  
864-617-5481

### JD 6500 HI BOY

60' boom, \$22,000  
Tom Fink  
Lexington  
803-622-4678

### FORD 1920 DSL TRACTOR

32 hp, PS, well maint, \$7000  
Fred Jackson  
Abbeville  
864-378-8078

### HD 6' SCRAPE BLADE

w/3ph, \$350 obo, no text  
John Warner  
Aiken  
803-582-9429

### OAK TRL

\$150; Woods 750 3ph backhoe, \$4440 cash  
Randy Orr  
Anderson  
864-295-3736

### JD GRAIN CART

400 bu, \$5500; KMC Gen II rip strip w/roller baskets, \$9000  
Ricky Tumbleston  
Charleston  
843-813-8383

### 15' IH 1020 HDR AUGER

\$400; NH rnd baler, \$2700; belts for IH 615 combine, \$75  
Charles Nichols  
Saluda  
864-445-8350

### KUBOTA L4701 W/LDR

4x4, 6' Land Pride box scrap, LT 200 hrs, \$26,500  
Russell Goings  
Union  
864-426-2309

### HAY BALE UNROLLER

for 4 or 5' & up to 5' in dia, by Dirt Dog, comp hook-up incl, \$850  
Bobby Counts  
Newberry  
803-315-7196

### '08 JD 3320 CAB

heat/ac, 4wd, 459 hrs used to mow, frt ldr, LN, \$28,500  
Gordon Bowers  
Beaufort  
843-521-7064

### BALE WAGON

NH Stackliner mod 1012, \$3900; 2 JD tractors, '58 620, \$2800; '53 JD 50, \$1500  
Billy Gallman  
Newberry  
803-276-7171

### KING 3PT HD HAY LIFT/FORK

& Worksaver bolt-on hay spear, mod #BRS10, SN 1050, \$400 for both  
Roland Temple  
Greenwood  
864-980-3351

### JD MT TRACTOR CULTS

& plows, touch-a-matic hyd leak, left rear tire weather cracked but holds air, \$3000  
David Green  
Spartanburg  
864-804-8090

### 8 WHL HAY RAKE

by Sistrex, \$2800; 2 basket tedder, \$800  
Robert Turner  
Clayton Leaphart  
Lexington  
803-922-2642

### INTL 1086 W/DUALS

no encl cab, runs good but needs work, \$9000 obro  
Josh Clayton  
Laurens  
864-871-3803

### 16' OBECO GRAIN BED

w/roll tarp & hoist, \$2000 obo  
Drake Kinley  
Anderson  
864-353-9628

### JD 335 4x4 BALER

twine, EC, \$4000; 3ph spin sprdr, 300 lbs, \$300; 3ph 110 gal boom spryr, EC, \$2000  
Bennie Smith  
Edgefield  
803-215-2551

### VMC TILLER 4' W

behind tractor w/PTO, \$800; trench plow, single foot for waterline digging, \$125  
Hank Medlin  
Greenwood  
864-554-8325

### JD 310G BACKHOE

4wd, w/r, 2', 3' buckets & hyd rock breaker, \$30,000  
Jason Whinghter  
Aiken  
803-215-0428

### 600A HY CYCLE JD SPRYR

GWC, \$2300  
Edward Berger  
Dorchester  
843-832-9233

### '52 FORD 8N

GC, \$3000; 8'x16' all steel trl w/2 ldr pads, 2 axles w/4 tires, \$4000, no text  
Jimmy Wilson  
Anderson  
864-923-2348

### 5' BUSH HOG

\$1000; 6' Woods finish mwr, \$1200; 8' Agmate finish mwr w/new belts, \$1850  
James Burns  
Laurens  
864-918-6308

### '98 MF281 W/FRT END LDR

\$15,500; 5' bush hog, \$700 w/extra whl, \$50; 3ph bale spear, \$200  
Robert Turner  
Orangeburg  
803-596-6463

### '21 HOOPER 7x20' TRL

14,000 lb, good tires, elect brakes, BP, \$6500, call/text  
Matt Owens  
Anderson  
864-207-6739

### HESTON 530 BALER

4x4, new belts & tines, \$2400; NH 56 rake, \$700  
Ronald Scoggins  
York  
839-232-9030

### 350 HAY RAKE

\$700; 2r cult, \$650  
R Adams  
Darlington  
843-393-7280

### 7' 7" DRAG HARROW

\$300; 60 gal Boom spryr, \$600; 6' box blade, \$300; 6' LP finish mwr, \$1550; all 3ph  
Stephen Bonnette  
Orangeburg  
803-707-5093

### HARROWS

\$100; hay rake, \$200; hay trl, \$300  
Gary Seay  
Spartanburg  
864-578-8214

### FIMCO SPRYR IH

26 gal, 1ph, 12' boom, \$350; 3ph hay fork, \$300; 7' box blade, 3ph scrape blade, scoop pan, \$1200  
Robert Yonce  
Aiken  
803-685-7240

### JD 6600 COMBINE

w/bean & corn hdrs, 30"r, \$6000  
C Bryant  
Lexington  
803-604-2113

### CROSS S/S FERT/LIME SPRDR

18" W feed chute, \$12,500; Sitrex 8 whl V rake, \$4000  
Ken Hunter  
Chester  
803-374-0448

## GARDEN

ADS ARE NOT ACCEPTED FROM COMMERCIAL NURSERIES, WHICH HAVE ANNUAL SALES OF \$5,000.

### FIG & POMEGRANATE

& Elderberry trees, \$20; grapevines, \$25/2; Mulberry, \$25; Loquat, \$30  
FC Noles  
Barnwell  
803-383-4066

### MUSCADINE PLANTS

purple, lrg fruit & hvy bearing, \$5 ea or 5 for \$20  
Brian Gray  
Greenville  
864-908-9777

### RABBITEYE BLUEBERRIES

\$2 ea  
Billy Eddins  
Chesterfield  
843-623-2427

### JUMBO ELEPHANT GARLIC CLOVES

ready to plant, \$5 ea  
Francis Shiver  
Kershaw  
803-669-1979

## FARM LABOR

NOTICES ARE ACCEPTED FOR AGRICULTURAL WORK ONLY AND NOT FOR HOUSEWORK, NURSING, OR COMPANIONSHIP NEEDS.

**MOBILE SAWMILLING**  
up to 30" dia & 21'L, drop off  
up to 52" dia & 16'L  
John Smith  
Pickens  
864-982-2249

**RECLAIM PASTURES**  
pond builds, demo &  
removal of old bldgs, land  
clearing, insured, free  
quotes, veteran owned  
Paul Irby  
Chester  
803-374-3142

**ONSITE MOBILE WELDING**  
& fabrication, farm & hvy  
equip, fences, gates, etc  
Garrett Stephens  
Greenville  
828-405-2176

**PECAN CRACKING/  
SHELLING**  
cracking only, 50¢/lb; 85¢  
for both  
Richard Naumann  
Richland  
803-546-4603

**12 STALL BARN**  
& pasture for rent, 2 lighted  
rings, off Peak exit, \$800/mo  
Melissa Williams  
Richland  
803-603-8075

**NUISANCE WILDLIFE  
CONTROL**  
coyote, armadillo, raccoon,  
beaver, etc  
Andrew Stevens  
Aiken  
803-640-0700

**EXCAVATOR MOWING**  
can mow fence lines,  
ditches, slopes, hard to reach  
areas, 4" cut cap, free quotes  
Dakota Hollman  
Lexington  
803-687-6382

**DOZER/TRACKHOE WORK**  
build & repair ponds, demo,  
tree removal, land clearing,  
roads, free est  
James Hughes  
Greenwood  
864-227-8257

**TRACTOR WORK**  
frt end ldr, dirt blade, bush  
hog, chain saw trees, back  
hoe work w/in 20 mi  
David Wannamaker  
Calhoun  
803-682-2117

**WANT SAWMILL SVCS**  
for (60+) 12' pine logs  
Randy Epting  
Newberry  
803-920-8682

**FORESTRY MULCHING**  
underbrush removal, fence  
line & pond bank mowing,  
livestock water stations &  
demolition  
Ken Wells  
Laurens  
864-449-8556

**POND CONSULTATIONS**  
& stocking; feeders; aerators,  
traps-turtle, fish, etc; feed,  
lime, fert, structure  
Clay Chappell  
Richland  
803-776-4923

**LIME SPREADING**  
specialize in TN, call for prices  
Drake Kinley  
Anderson  
864-353-9628

**DOZER/TRACKHOE WORK**  
land clearing, ditching,  
ponds, roads, trackhoe bush  
hog, building pads  
Fred Morris  
Florence  
843-621-8647

**FORESTRY MULCHING**  
& clearing, pine site prep,  
mulching, land clearing,  
ditching/drainage, ponds,  
road work  
Andy Anderson  
Florence  
843-862-1080

**LIGHT TRACTOR WORK**  
incl bush hogging, discing,  
cut up & removal of downed  
trees, light landscaping  
John Tanner  
Lexington  
803-422-4714

**PASTURE MGMT SERV**  
spray weeds, treat fire ants,  
fert & lime, plant pastures,  
Fescue, Ryegrass, Bermuda,  
Bahia  
Kenny Mullis  
Richland  
803-331-6612

**FORESTRY MULCHING**  
land clearing, wildlife mgmt,  
ditches, grading, pond digging  
Jay Lowder  
Clarendon  
803-473-0646

**TRACTOR/EQUIP REPAIR**  
tractor, dozer, skid steer,  
misc equip, mech, elec, hyd,  
ref avail, at shop & on-site  
Paul Hammitt  
Spartanburg  
864-921-2294

**WILDLIFE MGMT**  
nuisance wildlife control &  
removal  
Jarod Goins  
Lexington  
803-381-8917

**LIGHT BUSH HOGGING**  
tractor work, lawn maint  
Glenn Goins  
Lexington  
803-381-8287

**LAND CLEARING**  
septic install/repair, house/  
building pad, driveways,  
demolition, licensed &  
insured, serving SC  
Ben Leonard  
Pickens  
864-901-8155

**HAULING HAY**  
your location to POD,  
statewide, call for est; also  
fence installed, per your  
specs, statewide  
Bruce Thomas  
Dorchester  
843-636-1699

## FARM LAND

FARM LAND MUST BE OFFERED FOR SALE BY THE OWNER, NOT AN AGENT. TRACTS MUST BE AT LEAST 5 ACRES UNDER CULTIVATION, TIMBER, OR PASTURE. OUT-OF-STATE OWNERS—NOT REAL ESTATE AGENTS—MAY NOW SUBMIT ADS FOR LAND IN SC.

**WANT LAND TO LEASE**  
for hunting, Darlington  
or surrounding Cos, have  
equip to repair & maintain  
property  
Ray Sealey  
Darlington  
843-409-1717

**26A FARM SALUDA CO**  
on Fairfax Rd, pastured w/  
pond, house & workshop,  
\$260,000  
Terry Gibert  
Greenwood  
864-993-4212

**WANT 5+A**  
suitable for livestock,  
Fairfield, Kershaw Co  
Mason Motley  
Richland  
803-754-3224

**125A HAY PASTURES**  
for lease, in Greenwood Co  
near Bradley, reasonable terms  
Lucia Jaycocks  
Charleston  
843-276-3506

**10A PASTURE LAND**  
on Old Hundred Rd,  
\$25,000/A  
Stephen Gedosch  
Greenville  
864-982-4490

**80A EDGEFIELD CO**  
timber, \$4000/A  
John Rhodes  
Hampton  
803-346-9473

## FRESH PRODUCE

PRODUCE MUST BE RAW AND NON-PROCESSED. RAW MILK, BUTTER, AND CHEESE PRODUCTS MUST BE PERMITTED BY THE SC DEPARTMENT OF HEALTH AND ENVIRONMENTAL CONTROL. AN EGG LICENSE IS NOT REQUIRED FOR ON-FARM POINTS OF SALE.

**'23 PECANS**  
\$12/lb, \$35/3lb; cracked, shelled,  
in shell, \$3/lb; we crack &  
shell, ship avail or P-up  
Tracy Ferguson III  
York  
803-371-4595

**FARM FRESH CHICKEN  
EGGS**  
\$3/dz  
Ron Handley  
Georgetown  
843-896-0829

**CHICKEN EGGS**  
farm fresh, \$3/dz, \$4/18  
Rose Roof  
Lexington  
803-315-7307

**PECANS**  
in shell, \$2/lb  
Deborah Worth  
Aiken  
803-605-4644

**BLUE RIBBON SUGARCANE**  
\$75/100 stalks  
FC Noles  
Barnwell  
803-383-4066

**10-12 W/O PIGS**  
M already cut, Yorkshire/  
Hampshire/Duroc crossed,  
\$80 ea; disc w/2+  
Robert Turner  
Orangeburg  
803-596-6463

## GOATS / LLAMAS / SHEEP

**BOER BILLIES**  
\$150+  
Johnny Hickey  
Chesterfield  
843-537-7535

**KIKO BILLY**  
9 m/o, good breeding  
stock, \$175  
Jane Blackwell  
Laurens  
864-377-4606

**1 Y/O BILLY**  
Savanna/Nubian, exc  
breeder, \$200  
Billy Ragsdale  
Anderson  
864-419-8275

**KATAHDIN RAMS**  
9 m/o, \$200 ea  
Bill Heard  
Greenwood  
864-223-1606

**ANGORA GOAT**  
7 m/o buckling, intact, wht  
color carrier, \$250  
Emily Simon  
Lancaster  
803-627-7850

**SANAAN DOE**  
2 y/o, \$250; Pygmy mix  
buck, \$100  
Patty Jackson  
Cherokee  
864-316-0741

**NGN DWARFS**  
4 m/o wether, wht w/brn  
markings, brn eyed, \$75;  
blk & wht nanny, blue eyed,  
\$125; both polled  
David Oser  
Dorchester  
843-557-5200

**KATAHDIN EWES**  
10 m/o, breed, \$200; full  
pygmy goats, 3 y/o F reg, (3)  
14 m/o, 15" T, \$125 ea  
Barney Gause  
Williamsburg  
843-356-1671

**BOER & BOER/NUBIAN  
GOATS**  
6 m/o-2 y/o, billies & nannies,  
all colors, \$100-300  
Todd Kirby  
Orangeburg  
803-269-3337

**6 LRG DOES**  
poss bred, \$175 ea; Boar  
nanny, milk type, \$200; Irg  
dapple nanny, \$300; both  
bred to Kiko Billy; more  
Jimmy Wells  
Anderson  
864-437-9608

**BOER CROSS BILLY**  
2 mixed breed/milk goat  
cross nannies, 2 doe kids, all  
friendly, \$750 for all, may sep  
Derek Drafts  
Saluda  
803-429-3291

**3 NZ KIKO GOAT BUCKLINGS**  
1 doeling, B-early May, CDT,  
Famacha, reg not incl, \$295 ea  
John Cooper  
Greenville  
843-693-9099

**ST CROIX RAMS**  
no worming, foot trimming,  
or grain, ready for spring  
lambling, \$275 ea  
Daniel Verdin  
Laurens  
864-270-7251

**6 M/O SAVANNA/KIKO DOE**  
\$150  
Dale Smith  
Lexington  
803-606-9131

## POULTRY

**NRN BOBWHITE QUAIL**  
16+ w/o, flight cond, \$5.50 ea  
Joey Gunter  
Lexington  
803-920-1605

**WHT KING PIGEONS**  
banded prs, \$15/bird  
Benson Ray  
Georgetown  
843-933-5367

**INDIA BLUE PEACOCKS**  
1 F, 2 M, 4 y/o, good  
breeders, \$210 for all  
Bill Mulkey  
Saluda  
803-604-7247

**BLUE WHEATON  
AMERICANAS**  
FB, blue egg layers, 6 hens, 1  
roo, \$75 for all  
Barney Gause  
Williamsburg  
843-356-1671

**SWISS MONDAIN PIGEONS**  
by the pr, \$100 or \$1500 for  
flock of 40  
Thomas Waters  
Colleton  
843-696-6627

**GAME WARHORSE**  
Flarry Eye Greys, Hatch, Kelso,  
\$25+/hen; \$50+/roo; yng &  
grown Guineas, \$8-15 ea  
Philip Poole  
Union  
864-427-1589

**2 CREAM LEGBAR ROOS**  
18 w/o, \$35 ea or both for \$60  
Kirk Kessler  
Lee  
803-459-3801

**DIAMOND DOVES**  
\$20 ea  
Moscovia Faulk  
Sumter  
803-494-8499

**BREEDER SWINHOLE**  
\$100; Silver pheasants, \$25  
ea; parents hatched & raised  
Tommy Maness  
Anderson  
864-965-8380

**9 M/O LAYING HENS**  
RIR, Golden Comet, \$12 ea;  
Bobwhite quail, \$5 ea  
Marion Banks  
Newberry  
803-768-7608

**BLK SEXLINK PULLETS**  
10 w/o, \$10 ea; extra roos,  
\$2 ea; Wht Leghorn & Blk  
Rosecomb Bantams, \$25+/pr  
Marc Renwick  
Newberry  
803-271-8691

**BOBWHITE QUAIL**  
weather & flight cond, \$5.75 ea  
John Reed  
Sumter  
803-464-5757

**ROUEN DUCKS**  
friendly, \$20/pr  
Adell Dailey  
Richland  
803-361-7978

**LAYING HENS**  
7 m/o Buff Orpington, \$30  
ea; roos, \$20 ea  
Robert Turner  
Orangeburg  
803-596-6463

ADS ARE NOT ACCEPTED FROM COMMERCIAL NURSERIES, WHICH ARE DEFINED AS HAVING ANNUAL SALES OF \$5,000.

**1 GAL AZALEAS**  
\$5; Crepe Myrtles, Camellias,  
Lime Hydrangeas, \$20;  
Tea Olives & dwarf Mex  
Petunias, \$7; Boxwoods, \$6  
FC Noles  
Barnwell  
803-383-4066

**TRUE CHRISTMAS CACTI**  
Schlumbergera bridgesii, \$20  
ea; African violets, \$10 ea  
Pauline Lane  
Sumter  
803-464-5730

**3 GAL LANDSCAPING  
PLANTS**  
incl hollies, boxwoods &  
arborvitae, \$15  
Hugh Bland  
Edgefield  
803-336-9220

**MONKEY GRASS**  
aka Liriope, Hosta, \$4 ea; Iris,  
Daylily, \$5 ea; Hydrangea,  
Gardenia, \$10 ea  
Woody Ellenburg  
Pickens  
864-855-2565



## HAY & GRAIN

### '23 ALFALFA

2<sup>nd</sup> cut, 3x4x8, 1400 lbs, \$300; Colorado, 3<sup>rd</sup> cut, 3x4x8, 1400 lbs, \$350; Timothy, 3x3x8, 800 lbs, \$200  
Chris Roux  
Cherokee  
864-906-5471

### '23 4x5 RND MIXED GRASS

limed & fert, \$40 ea, qty disc  
Danny Leitner  
Fairfield  
843-200-0887

### 4x5 RND MIXED

\$25  
F Rowe  
Newberry  
803-271-7768

### '23 SPRING FESCUE

4x5 rnd, NR, HQ, string tied, can load, \$50/bale  
Jim Wood  
Pickens  
864-979-8145

### 36 BALES CQ HAY

\$25/roll; 16 bales hay, mostly Johnson grass, \$15/roll; all 4x5  
Kenneth Lominack  
Union  
864-426-5905

### SHELLED CORN

\$50; cracked corn, \$60, in your barrel; whole corn, 50 lb bag, \$10  
Plato Kneece  
Aiken  
803-532-6723

### '23 4x5 CB

tight wrap, \$60/bale  
Johnnie Legree  
Bamberg  
803-614-4665

### COB CORN

\$10/bag, 50+ lbs; trl run shelled, min trash, \$40/your drum  
Adam Anderson  
Newberry  
803-924-8466

### '23 HQ 4x54 BERMUDA

shed kept, \$70; '23 Alfalfa, 4x4, \$100; both net wrap; sq  
Alfalfa, \$17.50  
Tom Fink  
Lexington  
803-622-4678

### WHEAT STRAW

4x5 net wrap, \$40 ea  
Richard Knight  
Kershaw  
803-427-6440

### '23 SQ FESCUE

NR, in barn, \$7 ea; cow or goat hay, \$6 ea  
Jerry Butler  
Laurens  
864-697-6343

### 4x5 COW HAY

net wrap, under tarp, \$35, will del for fee  
Cyrus Shoffner  
Chesterfield  
843-307-7059

### '23 FESCUE MIX

4x5 rnd, net wrap, barn, \$70; outside, \$60  
Bobby Baker  
Lancaster  
803-804-2230

### 4x5 MIXED GRASS

net wrap, \$35+, in field bulk disc, del avail for fee  
Jacob Cathcart  
Fairfield  
803-603-7322

### '23 HQ COASTAL

4x54 rnd, net wrap, shed stored, \$70/bale, field stored, \$60/bale, del for fee  
David Fulmer  
Orangeburg  
803-917-0467

### WHEAT STRAW

sq, \$5/bale  
Jason Nichols  
Saluda  
864-992-2753

### '23 WHEAT/OAT/RYEGRASS

\$45; '23 Fescue/Grass hay, \$40; both 4x5 & net wrap  
Charles Nichols  
Saluda  
864-992-9292

### 4x5 FESCUE/MIXED GRASS

NR, barn stored, \$45; out of field while being bales, \$40; land fert, no manure  
Billy Gallman  
Newberry  
803-276-7171

### '23 5x5 MIXED HAY

in barn, \$60  
John Telligman  
Chester  
803-374-6231

### FESCUE/COASTAL MIX

fert, 4x5 rnd, net wrap, \$40 ea  
Ronny Wilson  
Anderson  
864-356-6959

### '23 CRAB GRASS HAY

600-1200 lb rnd bales, fert & weed free, string tied, \$30 & \$45/bale  
Joe Johnson  
Berkeley  
843-567-7774

### '23 FALL FESCUE/MIXED GRASSES

4x4 rnd, stored on racks, \$30  
Waitman Dixon  
Laurens  
864-683-6620

### '23 FESCUE

\$50; Ryegrass, \$60, spring cut, barn stored, both 4x5  
Britton Mccarter  
York  
704-913-6083

### '23 HQ COASTAL

limed, fert, shed kept, rnd, \$70; CQ, rnd, \$60, sq, \$8, del avail  
Eddie Phillips  
Sumter  
803-486-0081

### '23 HQ 4x5 COASTAL

limed/fert, NR, net wrap, rnd, \$50/ea p-up, \$65/ea del  
Thomas Holley  
Jefferson  
704-635-9355

### '23 4x5 NET WRAP CB

limed, fert, stored outside, \$65/bale  
Alfred Bush  
Aiken  
803-522-3763

### '23 4x5 CB

net wrap, HQ/\$75; CQ/\$45, baled w/out rain  
Henry Welch  
Berkeley  
843-709-0488

### 4x5 CQ HAY

dbl twine wrap, \$30  
Emily Simon  
Lancaster  
803-627-7850

### RYE GRASS HAYLAGE

250 bales in tube, \$45/bale, put on your trl; \$40/bale, you load & take all  
John Fowler  
Spartanburg  
864-766-9305

### EAR CORN

50 lb green net bag, \$8/bag; \$7/bag for 100 bags  
Craig Henry  
Beaufort  
843-521-3826

### ALFALFA

\$14/sq; Grass, \$45/rnd, all SC grown  
Jackie Rogers  
Spartanburg  
864-381-5971

### '23 RND 4x5 CB

NR, barn stored, \$70/bale, vol disc avail  
Mike Cousins  
Newberry  
803-924-7539

### 4x5 HQ RND FESCUE

limed & fert, shed stored, \$50/bale, vol disc avail  
George Bryant  
Pickens  
864-630-4934

### '23 4x5 RND FESCUE MIX

net wrap, in Honea Path, \$40/bale or \$45 to del  
Suzanne Reed  
Anderson  
864-293-0363

### '23 CB

sq/\$8 ea; shed kept rnd/\$75  
Andrew Rice  
Allendale  
803-686-1208

### '23 COASTAL

or Oats/Ryegrass blend hay, 4x5 net wrap, shed kept, \$65 ea  
Sam Rikard  
Lexington  
803-892-2630

### 4x5 NET WRAP CQ HAY

1<sup>st</sup> cut, \$30 ea, \$35 w/del  
Jeff Swearingen  
Fairfield  
803-420-0956

### '23 4x5 CB

fert & lime sprayed, \$75; baled oats, \$65; both HQ & shed kept; cow hay, \$45, del avl for fee  
Edward Chavis  
Barnwell  
803-671-3108

### 4x5 CB

\$70/bale; 4x5 CB w/little crabgrass, \$60; 4x5 CQ, \$50; sq CB, \$8; Crabgrass hay, \$50; all shed kept  
Larry McCartha  
Lexington  
803-606-2499

### FESCUE/MIXED GRASS

4x4, \$25, can del  
Neil Jackson  
Spartanburg  
864-706-0829

### HQ COASTAL

no litter used, rnd, \$80/field, \$90/barn; sq, \$8.50/field, CQ rnd, \$60; del avail  
George McCooy  
Chesterfield  
843-307-8866

## MISCELLANEOUS

### WOODEN PALLETS

for hay storage, etc, GC, \$1.50/reg, \$3/HD  
F Rowe  
Newberry  
803-271-7768

### FIREWOOD

seasoned oak & pecan, 8' bed load, free del 20 mi of  
St Matthews, \$150  
Joseph Smith  
Calhoun  
803-878-1337

### CHAIN SAWS

\$200  
Bill Heard  
Greenwood  
864-223-1606

### HDWD LUMBER

var Oaks & Poplar, boards 1"×12"×8'L, \$4/bdft, free del 300 bdft or less in Upstate  
Ryan Anderson  
Greenville  
864-234-2918

### SAND CLAY & TOPSOIL

5 ton load, \$60/sand clay; \$90/topsoil, del w/in 20 mi; rock or sand, \$2/mi del  
David Wannamaker  
Calhoun  
803-682-2117

### NEW GAS HOLE DIGGER

w/2 augers, \$420; 280 gal skid tank, \$150; all cash, more items  
Randy Orr  
Anderson  
864-295-3736

### CLUB CADET

mod 1450, \$450 obo  
Stanley Taylor  
Chester  
803-789-5110

### DEHORNING TOOLS

& dehorning, hoof cleaning, more, \$25 ea or \$90 for all  
George Whittle  
Edgefield  
803-275-3729

### PRIEFERT CATTLE HANDLING EQUIP

180 tub w/sweep, 24' alley palp cage, S04 chute on trlr, \$9000  
Paul Brown Jr  
Laurens  
412-289-1964

### 5<sup>TH</sup> WHEEL HITCH

max gross wt 15,000 lbs, max pull wt 3750 lbs, \$100  
Hank Medlin  
Greenwood  
864-554-8325

### RND CEDAR POSTS

cut to var sizes, 4-10" dia, 6-12' L, \$6-12 ea, depend on size; cut 4x4, \$2/bdft  
Douglass Britt  
McCormick  
864-391-3334

### PULPWOOD SAW TIMBER

hdwd pine, all types of thinning or clear cut, Upstate counties  
Tim Morgan  
Greenville  
864-420-0251

### CARPENTER BEE TRAPS

5 for \$85, ship to you post incl, call for more info  
William F Timmerman  
Aiken  
803-640-6265

### 1"×6" CEDAR LUMBER

\$1.50/ft; cedar posts, 30' utility poles, \$3/ft  
James Burns  
Laurens  
864-918-6308

### MEAT GRINDER

#32 Enterprise, board mounted w/new pulley whl, \$100  
R Long  
Newberry  
803-924-9039

### 55 GAL FG METAL DRUMS

\$20 ea; plastic drums, 30 & 55 gal, solid tops \$15 & \$20 ea; 275 gal port tow tanks, \$50 ea  
Philip Poole  
Union  
864-427-1589

### (2) 17" ENG SADDLES

w/fittings, \$350 ea  
Deborah Worth  
Aiken  
803-605-4644

### CEDAR

7' rnd posts, \$3 ea; poles, 8'/\$6, 10'/\$8; sq fence post, 6x6x8', \$25; lumber, \$3/bdft; mulch, \$50/P-up load  
Andy Morris  
Newberry  
803-276-2670

### 55 GAL PLASTIC BARRELS

\$10 ea; oil tank, \$75  
Gary Seay  
Spartanburg  
864-578-8214

### 25 GAL WASH POT

straight side, LN, \$400; wooden peach boxes, \$25 ea  
Robert Yonce  
Aiken  
803-685-7240

### CRAFTSMAN LAWN MWR

42" deck, old needs some work, can be used for parts, \$100  
Jarod Goins  
Lexington  
803-381-8917

### SUBMERGE PUMP

2" output, \$150; 3" PVC pipe, \$1/ft; 3" valves, \$10 ea  
Thomas Moore  
Oconee  
864-247-6528

### MILWAUKEE HORIZ MILL

mod 2HL, universal, digital readout, old but operational, \$1000 obo  
Alan Peabody  
Beaufort  
207-232-3803

### TOP SOIL/FILL DIRT

\$2/yd  
R Adams  
Darlington  
843-393-7280

### GOURDS

for Purple Martin birdhouses or craft/projects, \$4 ea/med, \$6 ea/lrg, cash only  
Glen Clamp  
Lexington  
803-673-8013

### JD X570 MWR

\$6000  
Mike Sheppard  
Newberry  
803-924-9977

### OLD COMP FARM BELL

old, #3, \$350; xl farm bell, w/wheel, comp, \$1200; #20 hash pots, \$200 ea; #15, \$150; more  
Perry Masters  
Greenville  
864-561-4792

### JD STX38 RIDING MWR

EC, 38" cut, 13 hp, hydro trans, GRC, fully serviced, \$985 obo  
Tom Williams  
Greenville  
864-423-1854

## RABBITS

### LA COTTONTAILS

& crosses, \$10+  
Duman Wicker  
Newberry  
803-537-7222

### REX

all colors, yng, \$15 & \$20 ea; grown bucks, \$15 ea; LA cottontail, grown bucks, \$15 ea; does, \$25 ea; yng, \$15 ea  
Philip Poole  
Union  
864-427-1589

### LA COTTONTAIL

crossed on MS cane cutter, \$10 ea  
Danny Cook  
Newberry  
803-924-6953

### MI COTTON TAILS

\$12 ea  
Steve Ard  
Aiken  
803-603-0642

## WANT - FARM EQUIPMENT

### 1-2 OR 3 BTM PLOW

w/rubber tires; frt wts, 2 pc for JD 60 tractor  
Tim Landers  
Pickens  
864-630-6432

### HIBOY

for spraying corn, reasonably priced  
Charlie Wadford  
Berkeley  
843-693-3150

### 1-2 REAR TRACTOR TIRES

good used 11.2x38 or 12.4x38  
Randy Orr  
Anderson  
864-295-3736

### JD MOD 60 OR 70

'55 or newer, in GC, must be working, using-not restoring  
John Royall  
Charleston  
843-693-5461

## WANT - LIVESTOCK

EACH AD MUST LIST SPECIFIC ANIMALS.

### 2-3 F ROUEN DUCKS

to buy  
Don Robbs  
Cherokee  
864-480-9885

### 100% NZ DOES

must be reg or registerable  
Cal Norris  
Edgefield  
864-378-2693

### KING PIGEONS

Randy Stone  
Florence  
843-621-5641

### BEEF COWS

any age or size  
Kenneth Satterfield  
Laurens  
864-304-3172

### SHETLAND & WELCH PONIES

small horses to live on 20A, any age, reasonably priced  
Jeanie Sabbagha  
Sumter  
803-494-9449

### GOATS

Thomas Moore  
Oconee  
864-247-6528



**5V CRIMP TIN**

any old farm equip or metal items removed for free  
David Wannamaker  
Calhoun  
803-682-2117

**ELEC FUEL TANK PUMP**

goes into 500 gal dsl tank  
Charles Nichols  
Saluda  
864-992-2753

**LIQ SUPPLEMENT TANK**

can also use parts of tanks w/in 75 mi  
Michael Bailey  
Lancaster  
803-288-3108

**HALF RUNNER BEANS**

old orig Mountaineer  
Glenn R Campbell  
Out of State  
423-483-3602

**HEADED COLLARDS**

Mary Murray  
Dorchester  
843-560-8150

**ANY SIZE WASH POTS**

syrup kettle, anvils, lrg coffee grinder, old lighting rod w/ balls & weathervane, more  
Perry Masters  
Greenville  
864-561-4792

**BLKSMITH ANVILS**

any size farm bells & wash pots, #3 24 bell cradle  
R Long  
Newberry  
803-924-9039

**PURPLE MARTIN GOURDS**

James Jolley  
Spartanburg  
864-461-2637

**PORTABLE SAWMILL**

to rent or buy; Meat grinder/ mixer/band saw/prcsg equip, used & comm grade  
Randy Epting  
Newberry  
803-920-8682

Review our ad policies online at

[AGRICULTURE.SOUTH-CAROLINA.GOV/MARKET-BULLETIN-POLICIES](https://www.southcarolinagov.com/agriculture)

# CLEMSON, AUSTRALIAN SCIENTISTS UNITE TO COMBAT FUSARIUM WILT IN COTTON

BY DENISE ATTAWAY, CLEMSON UNIVERSITY

Cotton farmers worldwide have long witnessed Fusarium wilt strip leaves from their crops, leaving plants with bare stems withering away in the fields.

Scientists from Clemson University and Australia are collaborating to create Fusarium-resistant germplasm for use in United States and Australian cotton breeding programs.

Christopher Saski, a geneticist in Clemson’s Plant and Environmental Sciences Department, is working with Warwick Stiller, a plant breeder in Australia’s Commonwealth Scientific and Industrial Research Organization (CSIRO), to develop germplasm to combat the FOV4 (Fusarium Race 4) strain in Upland cotton.

“Fusarium wilt is a primary disease affecting production in many growing areas in the United States and Australia, both of which rely on exports to sustain their production systems,” Saski said.

A soilborne pathogen causes the disease and can live in the soil for many years. Chemical controls and cultural practices are ineffective, making genetic-resistant plants a viable solution for controlling FOV4.

“We want to gain a deeper understanding of plant defense mechanisms and identify potential targets for genetic manipulation so that we can release varieties with durable genetic resistance much faster,” Saski said.

New breeding tools will help determine if recently discovered genes that provide resistance to FOV4 in United States cotton can also provide resistance

in Australian cotton.

“We will use cutting-edge research and collaboration to empower breeders with the tools and knowledge they need to optimize cotton production, thus helping secure the future of this vital crop,” Saski said.

Stiller said cross-disciplinary collaboration is essential to opening discussion and sharing methodologies, technology and experience across research groups.

“Although significant progress can be made, no single research group can solve the disease challenges across the global cotton industry,” Stiller said. “Through the dedicated efforts of two leading laboratories, the similarities and differences of resistance to FOV4 and the Australian biotype of FOV will be identified.

“The outcomes will benefit Australian and U.S. cotton growers by sharing information and genetic resources so both countries can continue to develop cultivars with increased resistance to these diseases.”

The severity of Fusarium wilt is increasing because of climate change caused by weather fluctuations.

“Fusarium wilt is a serious threat to cotton production in the United States and abroad,” said

FFAR Chief Scientific Officer Angela Records. “This insidious pathogen strips leaves from crops and jeopardizes farmers’ profit. Cotton farmers need access to resistant plants as soon as possible. This

research is helping to speed relief by developing tools to better understand the fungus and aid in faster breeding to combat it.”

This project is funded by a \$750,000 grant from the Foundation for Food & Agriculture Research (FFAR) as a Next Generation Crops research project, research conducted in part to improve crops’ resilience to climate change. Matching funds come from Clemson University, Cotton Incorporated and CSIRO for a total \$1,922,439 investment.



Symptoms of FOV4 on Upland cotton include dark and continuous vascular staining on the upper tap roots and lower stems of plants.

## SYMPTOMS OF FOV4

Symptoms of FOV4 on Upland cotton include dark and continuous vascular staining on roots. As the fungus continues to grow, more tissues decay. In severely infected plants, damage is seen as stunting, wilting and death; while other infected plants may only be stunted and still survive the growing season. To monitor for Fusarium wilt, walk the fields, pull random and symptomatic plants and, then, cut roots and inspect for taproot staining.

Source: Cotton Incorporated

# THE FARM-GROWN CHRISTMAS TREE SUPPLY FOR 2023, AND A 2022 SEASON RECAP

BY THE NATIONAL CHRISTMAS TREE ASSOCIATION

The supply of farm-grown trees will remain tight again for the 2023 Christmas season. The National Christmas Tree Association, the national association of Christmas tree growers, advises consumers to follow these recommendations:

- **Shop early to have the best choice.** Due to their popularity, in some parts of the US choose-and-cut Christmas tree farms sell their available trees. If you plan to shop at a tree farm shop early in the season after Thanksgiving. Shopping early in the season is a good idea wherever you plan to shop to have the most options to choose among.
- **You will be able to purchase a tree.** Supplies are tight and some locations will sell out early, but there are enough real farm-grown Christmas trees for everyone who wants one to get one. Supplies of real farm-grown trees have been tight since 2016, but each year shoppers have been able to find a tree.
- **Be flexible.** Because supplies are tight you may

need to look in different places to find a real tree. You should also be open to trying different types of trees. There are many beautiful varieties of Christmas trees, there will be one that is just right for you and your family.

## 2022 SEASON RECAP

NCTA conducts a survey of consumers each year in January to monitor important consumer Christmas tree purchasing trends that impact the industry including; the percentage of consumers purchasing real Christmas trees, where they purchased their trees, the price they paid and demographic information on real Christmas tree purchasers. The survey is taken by a 2,000-person sample that is balanced to represent the demographics of the US population. The results of the survey are used to project the total number of real trees purchased and calculate the median price paid by survey respondents who purchased a real tree.

The 2022 survey results project 22.34 million real Christmas trees were purchased in 2022. The survey respondents who purchased a real tree reported paying a median price of \$80 for their tree in 2022. The average real Christmas tree buyer in 2022 was 42 years old, lived in a household of more than 3 people and owned a home. Real tree buyers reported they earned more income in 2022 than in 2021.

## WHERE REAL FARM-GROWN CHRISTMAS TREES WERE PURCHASED IN 2022

- Choose & Cut Farm: 30.80%
- Chain Store: 19.38%
- Nursery: 16.61%
- Retail Lot: 15.92%
- Non-Profit (Boy Scouts, churches, etc.): 7.61%
- Online: 7.27%
- Other: 2.41%

# \$33.2 MILLION INVESTMENT IN SOUTH CAROLINA SUPPORTS NEW AND BETTER MARKET OPPORTUNITIES AND EXPANDS EXISTING ONES

USDA GRANTS WILL EXPAND MARKETS AND CREATE JOBS IN 37 STATES AND PUERTO RICO

BY USDA

U.S. Department of Agriculture (USDA) Secretary Tom Vilsack announced Nov. 27 that USDA is making investments that will expand markets for agricultural producers and strengthen American food and agriculture supply chains in 37 states as well as Puerto Rico.

“The Biden-Harris Administration is championing America’s farmers and ranchers by helping to expand businesses, support more robust American supply chains and save jobs,” Vilsack said. “Today’s investments in agricultural producers and rural entrepreneurs will create better economic opportunities that spur competition and bolster food supply chains across the country. This will result in more affordable prices and choices for consumers, as well as more opportunities and revenue for farmers.”

The announcement was made as part of the inaugural meeting of the new White House Council on Supply Chain Resilience which is part of President Biden’s agenda to bring down costs for American families and increase investment in America’s supply chains critical to economic and national security. The funding builds on prior investments made by USDA under President Biden’s Investing in America agenda to increase competition, enhance independent meat and poultry and other diversified food processing capacity, strengthen local and regional food systems and expand domestic, innovative fertilizer production.

USDA is making investments in 185 projects worth nearly \$196 million to create new and better market opportunities for producers and entrepreneurs in Arizona, California, Colorado, Florida, Georgia, Idaho, Illinois, Indiana, Iowa, Kansas, Kentucky, Louisiana, Maine, Maryland, Massachusetts, Michigan, Minnesota, Mississippi, Montana, Nebraska, New Hampshire, New Jersey, New Mexico, New York, North Carolina, Oklahoma, Oregon, Pennsylvania, South Carolina, South Dakota, Tennessee, Texas, Vermont, Virginia, Washington, Wisconsin, Wyoming and Puerto Rico.

“South Carolina received over \$33.2 million to support 18 projects located throughout the state,” said USDA Rural Development South Carolina State Director Dr. Saundra Glover. “These investments will support new and better market opportunities and expand existing opportunities for our rural farmers and ranchers.”

For example, in South Carolina:

- Agricultural Scientific, LLC will use a \$29.6 million loan through the Food Supply Chain Guaranteed Loan Program to help support the development of a large greenhouse in Hampton County, South Carolina. The funds will be used for Phase 1, which is a 35-acre tomato greenhouse and processing facility. Rural Development is also investing funds through the Business and Industry program.
- Split Creek Farms, LLC located in Anderson County, will use a \$250,000 Value-Added Producer Grant to provide working capital expenses associated with processing and marketing goat milk into cheeses for wholesale and to sell the raw milk into new markets. This project will create two new jobs and expand the customer base by 50 individuals and eight wholesale businesses.
- Manchester Farms Inc. located in Richland County will use a \$250,000 Value-Added Producer Grant to cover working capital expenses associated with processing, storing,

transporting, and marketing Halal Quail Eggs throughout South Carolina. This project will create 30 jobs and save 20 jobs in the local area.

- Lowcountry Creamery LLC will use a \$250,000 Value-Added Producer Grant to expand the customer base and sales of the pasteurized and flavored milk throughout the regions of South Carolina. The grant funds and matching funds will be used to offset the cost of marketing, labor, supplies, delivery, and utilities.

Other South Carolina projects funded are:

- Edisto Honey LLC: This Rural Development investment will be used to increase sales and profits for locally produced raw honey and honey products. Specifically, grant funds will be used to offset the costs of supplies, distribution, and labor. The customer base and revenue will be increased by 10 percent.
- Milky Way Jersey Farm Inc. dba Milky Way: This Rural Development investment will be used to increase customer base for the pasteurized and flavored milk. Grant funds and matching funds will help offset the cost of labor, supplies, marketing, and distribution.
- Lowland Farms LLC: This Rural Development investment will be used to increase processing and marketing of locally produced carrots, beets, and greens. Grant funds and matching funds will be used to offset the cost of labor, marketing, delivery, and supplies. It is expected that this project will increase customer base by 50 percent.
- Colony Craft Bev Co. dba High Wire Distillery: This Rural Development investment will be used to cover working capital expenses associated with improving company marketing efforts and brand recognition, non-family labor, and to pay for operational expenses associated with spirit-making and retail sales operations for their 100 percent rye whiskey. It is expected that this project will expand the customer base in different states.
- Seaside Grown LLC: This Rural Development investment will be used to provide market expansion of the Spicy Bloody Mary Mix drink. It is expected that this project will increase customer base by 80 percent and increase revenue by 60 percent. Grant funds and matching funds will be used to offset costs of supplies, labor, and marketing.
- The Sims Farms LLC: This Rural Development investment will be used to increase sales and marketing of locally produced organic vegetables. The Sims Farms LLC is a minority owned, 50 acre farm that has been in the family since 1876 and just recently was awarded the Century Farms Award. Grant funds and matching funds will be used to offset the cost of labor, supplies, and marketing. In addition, this project will increase customer base by 35 percent.
- Bulls Bay Enterprises Inc.: This Rural Development investment will be used to increase sales and marketing of locally grown clams. Specifically, grant funds will be used to offset costs of labor, packaging, distribution, and marketing.
- Keegan-Filion Farm Inc.: This Rural Development investment will be used to allow Keegan-Filion Farm Inc. to offset costs of processing, delivery, marketing, labor, and supplies of its beef products. It is anticipated that this project will expand customer base by 30 percent.
- Roblyn's Neck Trophy Club LLC: This Rural Development investment will be used to expand customer base for the locally produced grits and corn meal. Specifically, grant funds and matching funds will be used to offset the cost of labor, supplies, and marketing.

- Barrier Island Oyster Company LLC: This Rural Development investment will be used to increase sales of locally grown premium single oysters. Barrier Island Oyster LLC will use the grant funds and matching funds to offset the cost of labor, storage, marketing and delivery. It is expected that this project will increase customer base by 50 percent and increase revenue by 30 percent.
- Grants Lowcountry Fungi LLC: This Rural Development investment will be used to increase sales and customer base for locally grown mushrooms. The Lowcountry Fungi LLC will use the grant funds to offset the cost of labor, supplies, marketing and transportation.
- Southern Oaks Jerseys Farm & Creamery LLC: This Rural Development investment will be used to increase processing and marketing of locally produced ice creams. Southern Oaks Jerseys Farm and Creamery LLC will use the grant funds to offset the cost of labor, supplies, marketing, and delivery. It is anticipated that this project will increase customer base by 67 percent and increase revenue by 33 percent.
- Hoss Farms Hodge LLC: This Rural Development investment will be used to increase marketing and selling of locally grown vegetables in Marion and Charleston counties. Grant funds will be used to offset the cost of labor, marketing and supplies. It is expected that this project will increase revenue by 30 percent and increase customer base by 50 percent.
- Cannon Ag Products LLC: 2 This Rural Development investment will be used to increase processing and marketing of locally produced and shelled lima beans. Cannon Ag Products LLC will use the grant funds and matching funds to offset the cost of shelling, labor, distribution, supplies, and marketing.

## BACKGROUND

USDA and the Biden-Harris Administration are making these investments through six programs designed to create economic opportunities for people and businesses in rural areas.

Rural Business Development Grants assist with economic development planning and/or the financing or expansion of rural businesses by providing technical assistance and training for small rural businesses.

The Value Added Producer Grants Program helps farmers and ranchers venture into new markets by adding value to their bio-based products that will increase their revenue. Funds may be used to process or market these products. For example, an olive farmer may use funding to produce and market olive oil.

Business and Industry Loan Guarantees help improve rural economic health by increasing access to business capital, allowing commercial lenders, like banks and credit unions, to offer affordable financing to eligible rural businesses. This program was authorized by the Consolidated Farm and Rural Development Act.

The Food Supply Chain Guaranteed Loan Program supported investments in infrastructure for food processing, manufacturing, storage, transportation, wholesaling, aggregation and distribution to increase capacity and create a more resilient, diverse and secure U.S. food supply chain through the American Rescue Plan Act.

*Continued on next page*



# USDA EXTENDS APPLICATION DEADLINE FOR DISCRIMINATION FINANCIAL ASSISTANCE PROGRAM TO JANUARY 13

BY USDA

The U.S. Department of Agriculture is extending the deadline for the Discrimination Financial Assistance Program to January 13, 2024, to give eligible farmers, ranchers and forest landowners more time to apply for assistance. The original deadline was October 31, 2023.

This deadline extension is responsive to feedback from potential applicants, nongovernmental program administrators and community-based organizations working closely with USDA to inform and assist eligible individuals. The new deadline will allow more time to reach and help farmers, ranchers and forest landowners through direct, no-cost technical assistance and training sessions. The extension will also ensure everyone has adequate time to apply, including producers whose harvest season falls during the original application period.

“USDA knows it must earn the trust of the farmers, ranchers and forest landowners who are eligible for this program. That makes transparency in the administration of the Discrimination Financial Assistance Program crucial,” said Agriculture Secretary Tom Vilsack. “In that spirit, after receiving feedback from organizations that have been supporting producers throughout the application process, we have made the decision to extend the deadline. We believe this is the appropriate action to take to ensure all eligible individuals wishing to apply are adequately informed about the program and have the opportunity to receive any necessary assistance.”

Since the opening of the financial assistance application process on July 7, the Discrimination Financial Assistance Program team has embarked on a nationwide outreach campaign and quickly opened 30 local offices across 26 states. Regional administrators have held well over 600 virtual and in-person events across the country. Cooperators have also held dozens of virtual and in-person events to complement these efforts while also educating their specific networks. Advertising on digital, print and radio channels targeting potentially eligible individuals and rural communities has also been deployed. These efforts have successfully allowed program staff to reach many potential applicants and will be further increased with the new, extended deadline.

This program delivers on Section 22007 of the Inflation Reduction Act, which provides financial assistance for farmers, ranchers and forest landowners who experienced discrimination in USDA farm lending programs prior to January 2021. Congress provided a total of \$2.2 billion for this program. The amount of money awarded to individuals through this program will depend on the number of eligible applicants and the consequences of the discrimination. Eligible individuals have the option to apply online or by submitting paper-based forms via mail or in-person delivery to local program offices. Applicants are not required to retain an attorney and should take precautions to protect themselves from potential scams.

In addition to the application deadline change, the deadline to request records from USDA's Farm Service Agency for use in applications has been extended to Friday, Nov. 3, 2023. The application process was designed so that FSA records are not required, though relevant records may be attached to an application as additional evidence if they are available.

To learn more about the Discrimination Financial Assistance Program or receive assistance in English or Spanish, visit [22007apply.gov](https://22007apply.gov), email [info@22007apply.gov](mailto:info@22007apply.gov) or contact the national call center at 1-800-721-0970 from 8 a.m. ET to 8 p.m. PT, every day except federal holidays. If you use sign language to communicate, you can use the 711 relay service to call. You may also email or contact the national call center if you have a disability and need another accommodation. Information about the program, resources, recent office openings and local events across the country is also available through a weekly e-newsletter.

USDA's commitment to equity spans the Department's mission areas and agencies. We are actively working to build a USDA that ensures none of our customers are ignored or left behind. The Discrimination Financial Assistance Program is just one of many programs helping USDA rebuild trust, address systemic issues and improve service to people who may have been underserved by USDA in the past. To learn more about USDA's equity work and resources, visit [usda.gov/equity](https://usda.gov/equity).

CONTINUED FROM PAGE 10

The Rural Economic Development Loan and Grant Program provides funding for rural projects through local utility organizations. USDA provides zero-interest loans to local utilities which, in turn, lend the funding to local businesses to support projects that will create and keep jobs in rural areas.

Under the Biden-Harris Administration, USDA Rural Development provides loans, loan guarantees and grants to help expand economic opportunities, create jobs and improve the quality of life for millions of Americans in rural areas. This assistance supports infrastructure improvements; business development; housing; community facilities such as schools, public safety and health care; and high-speed internet access in rural, tribal and high-poverty areas. For more information, visit [rd.usda.gov](https://rd.usda.gov).

USDA is transforming America's food system with a greater focus on more resilient local and regional food production, fairer markets for all producers, ensuring access to safe, healthy and nutritious food in all communities, building new markets and streams of income for farmers and producers using climate-smart food and forestry practices, making historic investments in infrastructure and clean energy capabilities in rural America, and committing to equity across the Department by removing systemic barriers and building a workforce more representative of America. To learn more, visit [usda.gov](https://usda.gov)



*South Carolina*  
**CORN & SOYBEAN GROWERS MEETING**  
**THURSDAY, DECEMBER 14, 2023**  
8:30 AM – 3:30 PM  
Santee Conference Center • 1737 Bass Drive/US-15, Santee, SC 29142

**KEYNOTE: Corn and Soybean Drying and Storage: Current Technology and Management**

**SPECIAL GUEST SPEAKER:**  
*Dr. Kenneth Hellewang*  
North Dakota State University,  
Extension Engineer and Professor

Other presentations will include guests from the American Soybean Association and National Corn Growers Association and updates on soybean checkoff funded research at Clemson University.

**SCAN THE QR CODE TO REGISTER**

## 2023 LEGAL NOTICE

### NOMINATIONS FOR CANDIDATES TO FILL VACANCIES ON THE SOUTH CAROLINA WATERMELON BOARD

Pursuant to the provisions of the "Agriculture Commodities Marketing Act" of 1968, as amended, and Marketing Order No. 7 for South Carolina Watermelons issued by the Agriculture Commission of South Carolina, NOTICE IS HEREBY GIVEN that the terms of the following members of the South Carolina Watermelon Board expire as follows:

Terms expiring December 31, 2023

DISTRICT I	MARK WILLIAMS, ISLANDTON, SC
DISTRICT II	RUSTY KINARD, LODGE, SC SCOTTY SANDIFER, BLACKVILLE, SC

As a board member for the South Carolina Watermelon Board, you will be involved in watermelon advertising and sales promotion, research, prevention of unfair trade practices, cooperation with other agencies, market development programs, educational programs and determining the grades of acceptable watermelons in South Carolina.

If you are interested in becoming a SC Watermelon Board Member, you will need to request a petition. This petition can be requested by calling (803) 734-9807 or by emailing [elloyd@scda.sc.gov](mailto:elloyd@scda.sc.gov). All petitions must be received by **Friday, December 15, 2023**. For a petition to be eligible/accepted, it must be signed by no less than five watermelon producers from the counties of the district seat you are petitioning for. Additionally, along with the submission of the petition, nominees will need to provide proof of producer verification (example: a receipt from a 1st purchaser).

Terms of office are for 3 years. To qualify, a candidate must be a resident of South Carolina and of the district where he/she petitions for nomination. This person must be actively engaged in the production of watermelons within the State of South Carolina for a period of no less than one year. Additionally, during that one-year period, candidate will have derived a substantial portion of his/her income from watermelon production and shall continue to do so from the production of watermelons during their term of office. The SC Watermelon Board holds approximately 3 to 4 meetings per year to conduct business. Board members are reimbursed for mileage to and from meetings and paid a \$50 per diem per meeting attended.

District 1 includes the following counties: Darlington, Cherokee, Spartanburg, York, Lancaster, Chester, Union, Fairfield, Berkeley, Charleston, Richland, Florence, Marion, Clarendon, Sumter, Kershaw, Lee, Williamsburg, Georgetown, Horry, Dillon, Marlboro, Chesterfield, Aiken, Bamberg, Calhoun, Colleton, Dorchester, Lexington, Orangeburg, Abbeville, Anderson, Greenville, McCormick, Oconee, Pickens, Laurens, Greenwood, Edgefield, Saluda, and Newberry.

District 2 includes the following counties: Allendale, Barnwell, Beaufort, Hampton, and Jasper.

Frances H. Price, Chair  
The Agriculture Commission of South Carolina  
PO Box 11280, Columbia, SC 29211



# CRANBERRY CREATIVITY

## INCORPORATE CRANBERRIES INTO YOUR WINTER COOKING AND PRESERVING

BY CHASE MCINTOSH BAILLIE, CLEMSON COOPERATIVE EXTENSION

Fresh cranberries pack a punch as a component of fall and winter foods, drinks, and décor. With their small size, bright deep-red color, tart taste, and dense texture, they are versatile in sweet and savory applications. They are a seasonal fruit harvested in the fall, available from October to early January, and are only grown in eight states: South Carolina, unfortunately, isn't one of them. (However, they pair well with plenty of South Carolina-grown foods!) Wisconsin grows approximately 61% of the cranberries in the US while Massachusetts accounts for another 26%. New Jersey, Oregon and Washington state combine to make up the remaining 13%. ([uscranberries.com](http://uscranberries.com))

One 12-ounce package of cranberries is about 3 cups of whole berries which can be easily stored in the refrigerator for 4 weeks and the freezer for about a year, just as they are, in the package they

come in, so stock up during the season. Cranberry producers like to say "Use one and keep two." They can also be rinsed in cool, running water, and dried in a salad spinner; or patted dry with a cloth, prior to being placed on a baking sheet to freeze individually, then placed in an airtight container or freezer bag.

Cranberries are a nutrient-dense food with essential vitamins and minerals, dietary fiber and other naturally occurring compounds that may have potential health benefits. They are naturally low in sugar and high in acid, giving them their tart taste; as a result they are generally not eaten raw. The flavor and texture can be calmed and the fruit transformed into a wide variety of new products by adding sweetener and other fruits and juices to make jams, jellies, pie filling, sauces, salsas and dips. Cranberries can be mixed with vinegar and

spices to make mustards or pickles; or with onions, nuts, raisins, and coconut to make conserves and chutneys. Any of these products would be great on their own, or mixed with cream cheese as an addition to your next grazing table, condiment tray; or anytime you want a sweet and tangy addition to your meal. Try the following science-based, tested recipes below for cranberry pickles, mustard, and conserve (a soft spread with fruit, nuts, raisins) and share your experience with us by using the hashtag [#carolinacanning](https://twitter.com/carolinacanning).

For more information on food safety, preservation, and upcoming events and classes, check the [Clemson Extension Food Systems and Safety website](http://Clemson Extension Food Systems and Safety website) at [clemson.edu/food](http://clemson.edu/food).

Chase McIntosh Baillie is Clemson Cooperative Extension's Food Systems and Safety Area Agent for Horry, Georgetown and Florence counties.



### Spiced Cranberry Pickles

Source: [foodinjars.com](http://foodinjars.com)

Yield: 4 pints, 8 half pints / Headspace: ½ inch

Process Time: 10 minutes

This product can be made and served after melding for 24 hours and kept in the refrigerator for two weeks.

- 3 12-oz. bags of cranberries
- 3 cups apple cider vinegar
- ¾ cup filtered water
- ½ cup granulated white sugar
- 1 inch segment of fresh ginger sliced
- 1 tsp. allspice berries
- ½ tsp. whole cloves
- 2 cinnamon sticks
- ½ tsp. black peppercorns

Prepare a water bath or steam canner, jars, and lids. Wash cranberries and remove stems and bruised berries.

In a medium saucepan, combine vinegar, water, and bring to a boil. Add cinnamon sticks to the brine. Place fresh ginger, allspice berries, whole cloves, and black peppercorns in a spice bag or tie them up in a length of cheesecloth. Add them to the brine.

Once brine is boiling vigorously, add cranberries. Stir to combine and cook for 5–7 minutes, until the cranberries begin to pop and the brine has returned to a rolling boil.

When cooking time has elapsed, remove pot from heat. Remove spice bag/cinnamon sticks. Break cinnamon sticks in half and set aside.

Using a slotted spoon, ladle cranberries into prepared jars. Cover berries with brine, leaving ½ inch headspace. Place a cinnamon stick segment into each jar. Wipe jar rims, apply lids and rings and process in a boiling water bath canner for 10 minutes. When time is up, remove jars from canner and place them on a folded kitchen towel to cool. When jars are cool enough to handle, remove rings and check seals. Any unsealed jars should be kept in the refrigerator. Let jars sit for at least 24 hours before eating.

### Cranberry Mustard

Source: [freshpreserving.com](http://freshpreserving.com)

Yield: 7 4-oz. quarter pint jars / Headspace: ¼ inch / Process Time: 10 minutes

Note: This product can be reduced by ½, served immediately, frozen, or stored in the refrigerator for 1 week.

- 1 cup red wine vinegar (at least 5% acidity)
- ⅔ cup yellow mustard seeds
- 1 cup water
- 1 Tbsp. Worcestershire sauce
- 2¾ cups fresh or frozen cranberries (about 1 12-oz. bag)
- ¾ cup sugar
- ¼ cup dry mustard
- 2½ tsp. ground allspice

Prepare boiling water canner. Heat jars in simmering water until ready for use. Do not boil. Wash lids in warm soapy water and set bands aside. (Follow manufacturer instructions for lids.)

Bring vinegar to a boil in a medium saucepan. Remove from heat and add mustard seeds. Cover and let stand at room temperature until seeds have absorbed most of the moisture, about 1½ hours.

Combine mustard seeds and liquid, water and Worcestershire sauce in a food processor or blender. Process until slightly grainy. Add cranberries and blend until chopped.

Bring cranberry mixture to a boil in a medium saucepan, stirring constantly. Reduce heat and simmer for 5 minutes, stirring frequently. Whisk in sugar, dry mustard and allspice. Continue to simmer, stirring frequently, until volume is reduced by a third, about 15 minutes.

Ladle hot mustard into a hot jar leaving a ¼ inch headspace. Remove air bubbles. Wipe jar rim. Center lid on jar and apply band, adjust to fingertip tight. Place jar in boiling-water canner. Repeat until all jars are filled. Water must cover jars by 1 inch. Adjust heat to medium-high, cover canner, and bring water to a rolling boil. Process quarter pint jars for 10 minutes, adjusting for altitude. Turn off heat and remove cover. Let jars cool 5 minutes. Remove jars from canner; do not retighten bands if loose. Cool 12–24 hours. Check lids for seal, they should not flex when center is pressed.

### Cranberry Orange Conserve

Source: [Bulletin #4045, umaine.edu](http://Bulletin #4045, umaine.edu)

Yield: 4 half pints / Headspace: ½ inch / Process time: 10 minutes

Note: This product can be reduced by ½, served immediately, frozen, or stored in the refrigerator for 1 week.

- 1 unpeeled, finely chopped orange
- 1 cup water
- 3 cups sugar
- 4 cups cranberries, washed
- ½ cup seedless raisins
- ½ cup chopped nuts

Combine orange and water; cook rapidly until peel is tender (about 20 minutes). Add cranberries, sugar, and raisins. Bring slowly to boiling, stirring occasionally until sugar dissolves. Cook rapidly, almost to the jelling point of 220°F (about 8 minutes). As mixture thickens, stir frequently to prevent sticking. Add nuts during the last 5 minutes of cooking. Pour hot conserve into hot jars, leaving ¼-inch headspace. Wipe rims of jars with a damp, clean paper towel. Adjust lids. Process in a boiling water or steam canner for 10 minutes at altitudes of 0–1000' above sea level. Let cool, undisturbed, 12–24 hours and check for seals.