

STORMY WEATHER: RECOVERY PLAN

Retail Food Establishments - Food Safety

Of course stormy weather can happen at any time, but there is a part of the year when it seems to happen all the time. The storm season is on its way. Floods, hurricanes, tornados, and other storms have the potential to cause structural damage, power supply failures, and damage to water and sewer lines.

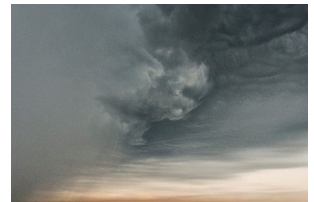
Having a written emergency recovery plan, that includes steps to take after a warning notice has been issued for a natural disaster, can help to minimize the impact on the food establishment. It can also provide needed guidance under often stressful and chaotic conditions. For example, a plan might include:

- Instructions for temporarily relocating valuable food supplies to a facility outside the affected area before an event is expected to happen.
- Contact information for resources that may be helpful before, during, or after an emergency event.



The plan can also provide guidance on safe, efficient, recovery procedures once the event has ended.

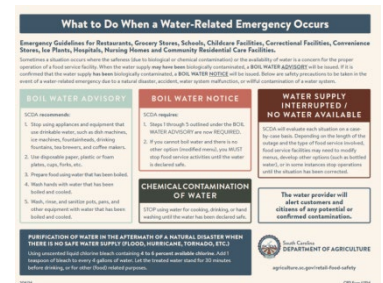
If an unexpected man-made event such as an interruption in the power supply, water supply, or sewage disposal system should occur, a plan can provide guidance on quick actions to take.



RECOVERY ASSISTANCE

After an emergency or disaster event, SCDA may contact you by email, phone, or text with information related to the event, or to request facility impact information that will help us provide recovery assistance.

Fact sheets, signs and guides that provide information and resources are available on the Retail Food Safety & Compliance, [Educational Materials](#) and [Environmental Emergency & Recovery](#) web pages. Some of the fact sheets and a sign available on the web pages are shown below.



Additional information and resources may be found at the [South Carolina Emergency Management Division \(SCEMD\)](#) website.

